

Long Division With Partial Quotients #2

How to Divide With Partial Quotients

Step 1: Work with multiples of 100 and ask yourself: How many times can 5 go into 1,325? 5 can go into this dividend 200 times without going over.

Step 2: Subtract 1,000 from 1,325. How many times can 5 go into 325? Think multiples of 10! 5 multiplied by 60 is 300.

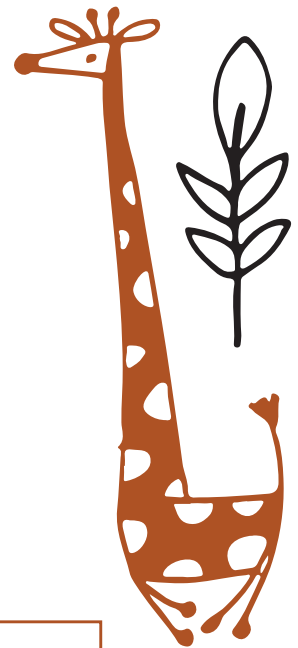
Step 3: Repeat until you can't subtract.

Step 4: The sum of the partial quotients is your final answer.

divisor	5	1,325	/	dividend
	-1,000	325		200
	-300	25		60
	-25	0		5

$$200 + 60 + 5 = 265$$

$$1,325 \div 5 = \boxed{265}$$



Directions: Find each quotient using the Partial Quotient Strategy and show all of your work. There are no remainders.

1. 293

5	1,465	
	-1,000	200
	465	
	-450	90
	15	
	-15	3
	0	

$200 + 90 + 3 = 293$

2. 856

3	2,568
---	-------

3. 332

9	2,988
---	-------

Let's Check Using the Inverse Operation!

Use multiplication to check your answer for problem number 1. Show all of your work.

Students' responses will vary. This shows that there are 5 equal groups of 293.

$$\begin{array}{r} 41 \\ 293 \\ \times \quad 5 \\ \hline 1,465 \end{array}$$