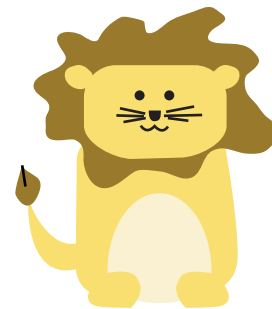


Lion Sudoku

Complete the four Sudoku puzzles.
Every row, column, and 3x2 block
must contain the numbers 1 through 6 once.



Difficulty: ★★☆☆

1	2	3	4	5	6
4	6	5	2	1	3
2	1	4	6	3	5
5	3	6	1	4	2
3	4	2	5	6	1
6	5	1	3	2	4

1	4	5	2	6	3
2	3	6	4	1	5
4	1	2	3	5	6
6	5	3	1	2	4
3	6	1	5	4	2
5	2	4	6	3	1

1	2	4	5	3	6
6	3	5	2	1	4
3	5	2	4	6	1
4	6	1	3	2	5
5	1	3	6	4	2
2	4	6	1	5	3

3	1	6	2	5	4
4	5	2	1	3	6
6	4	3	5	1	2
5	2	1	6	4	3
1	6	4	3	2	5
2	3	5	4	6	1