

**Answer Key**

# Jill and Mike: Practicing Vowel I Sounds

The vowel sound in **Jill**



is a *short i*.

The vowel sound in **Mike**



is a *long i*.

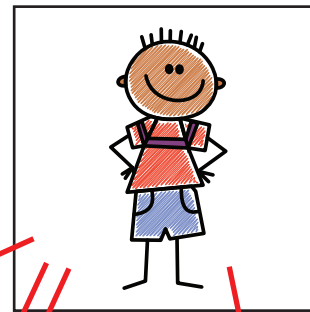
**Directions:** What do you see in each picture? Say the name of each picture out loud.

Draw a line from the pictures with a *short i* sound to Jill.

Draw a line from the pictures with a *long i* sound to Mike.



**Jill**



**Mike**

