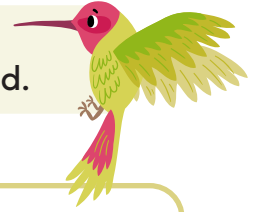


Identifying Irrational Numbers Maze

Directions: Find the path from start to finish. Your path should go only through spaces with an irrational number. No diagonal moves are allowed.



START ↓	π	$\sqrt{16}$	$\frac{1}{2}$	17	$\sqrt{25} - 4$
4π	$\sqrt{11}$	$\sqrt{3}$	$\pi - 2$	$0.\bar{3}$	
-4	2.4	$3\frac{3}{4}$	$-\pi$	112	
$2 + \sqrt{9}$	$-\sqrt{14}$	$\pi + 1$	$3 + \sqrt{8}$	$-\frac{2}{3}$	
$\frac{2}{15}$	-6π	-9	$2.\bar{8}$	$-\sqrt{36}$	
$-\frac{12}{11}$	$\pi + 6$	$\sqrt{5} - \sqrt{2}$	$11 - \pi$	-2.5	
$6.\bar{18}$	$\sqrt{49} - 7$	37	$5 + \sqrt{18}$	$\frac{21}{20}$	
$-\frac{5}{6}$	$-\sqrt{41}$	$2\pi - 1$	40π	$\frac{4}{9}$	
0	$\sqrt{11} - \sqrt{4}$	$-0.\bar{4}$	$-\sqrt{81}$	-0.09	
$20 - \sqrt{4}$	-8π	$3 + \sqrt{22}$	7π	$\sqrt{36} + 4$	

FINISH
↓

