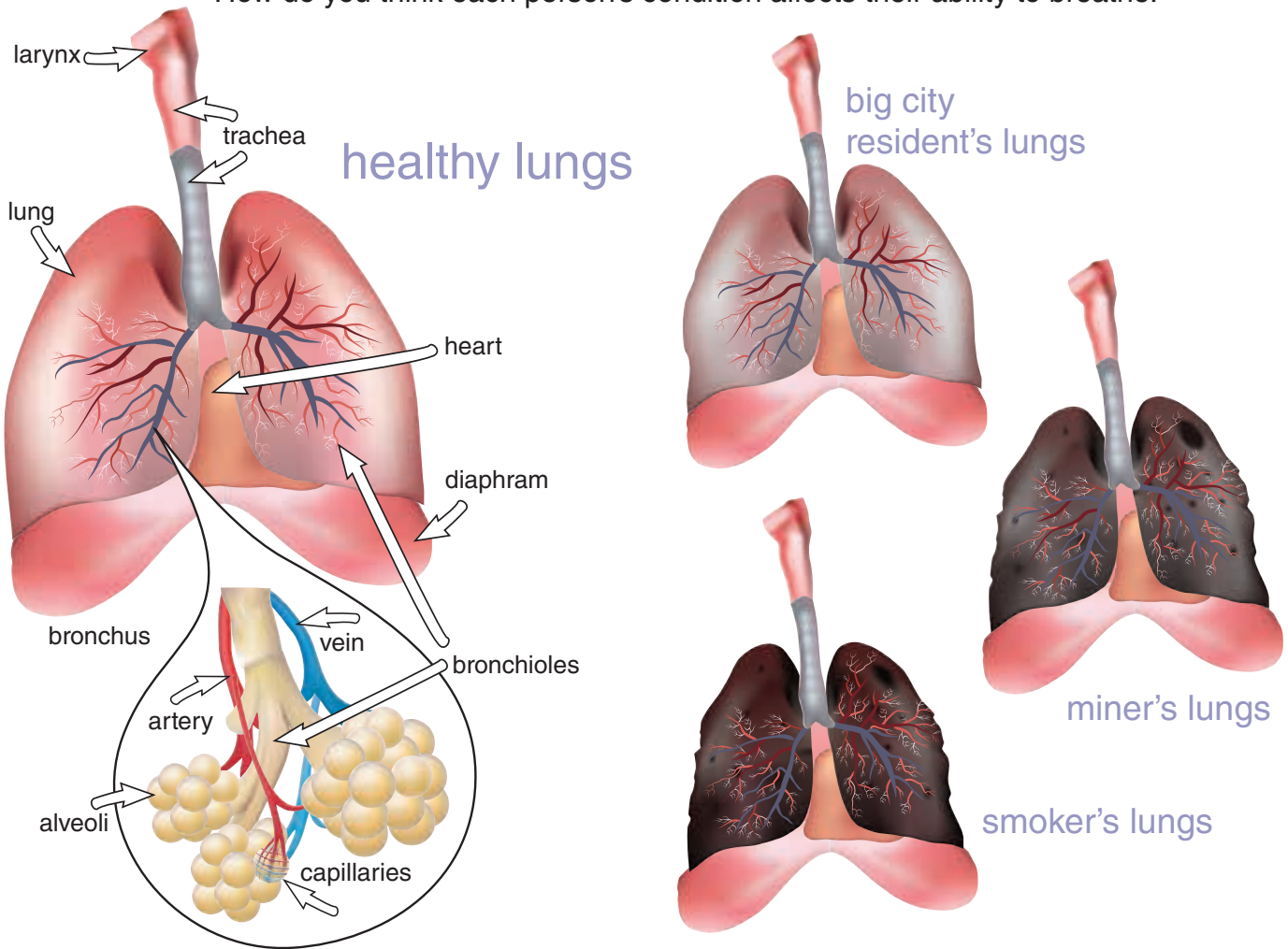


# Are your lungs healthy?

**Directions:** Compare the healthy pair of lungs to the other types of lungs.  
How do you think each person's condition affects their ability to breathe.



**Word Scramble!** Use the diagram above to unscramble these names of lung parts.

1. vialaol     alveoli

5. tchraae     trachea

2. gnul     lung

6. chusbron     broncus

3. terary     artery

7. brchionleo     bronchioles

4. evin     vein

8. pillapciesa     capillaries