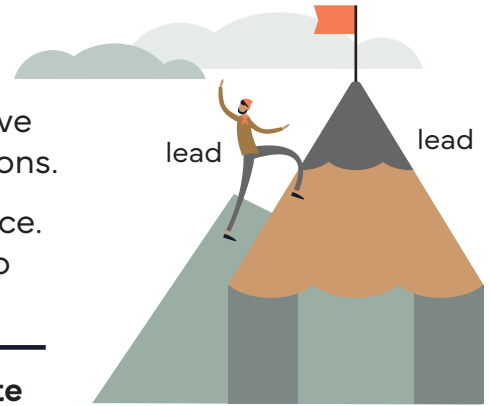


Homograph Pairs

Homographs are words that are spelled the same way but have different meanings. They may also have different pronunciations.

Example: The word **lead** can mean to guide someone to a place. It can also mean a thin stick of dark material used in pencils to make marks.



Choose the correct homograph from the word bank and write it next to the corresponding set of clues in each row.

Word Bank: close • object • entrance • bow • wind • permit • live • tear

	Clue 1	Clue 2	Homograph
1.	the front of a ship	to bend forward	bow
2.	to continue to be alive	watching a performance as it happens	live
3.	a pass that allows you to do something	to give permission to someone	permit
4.	a natural movement of air outside	to follow a series of curves and turns	wind
5.	to disagree with something	an item that you can see and touch	object
6.	to fill someone with wonder and delight	a place of entry; a door	entrance
7.	a drop of liquid that comes from your eyes, especially when you cry	to separate or rip something into parts	tear
8.	to cover the opening of something	near in space; not far away or distant	close