

Geometry Basics: More Perimeters

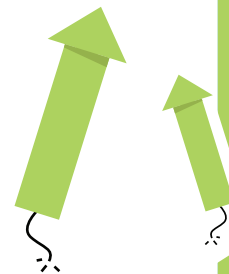


Geometry: Perimeter

The perimeter of a polygon is equal to the distance around it.



$$\begin{array}{r}
 2 \text{ feet} \\
 4 \text{ feet} \\
 2 \text{ feet} \\
 + 4 \text{ feet} \\
 \hline
 12 \text{ feet}
 \end{array}$$



Directions: Calculate the perimeter for the following polygons.

<p>perimeter = 30 cm</p>	<p>perimeter = 30 cm</p>	<p>perimeter = 48 cm</p>
<p>perimeter = 43 in.</p>	<p>perimeter = 20 in.</p>	<p>perimeter = 20 in.</p>