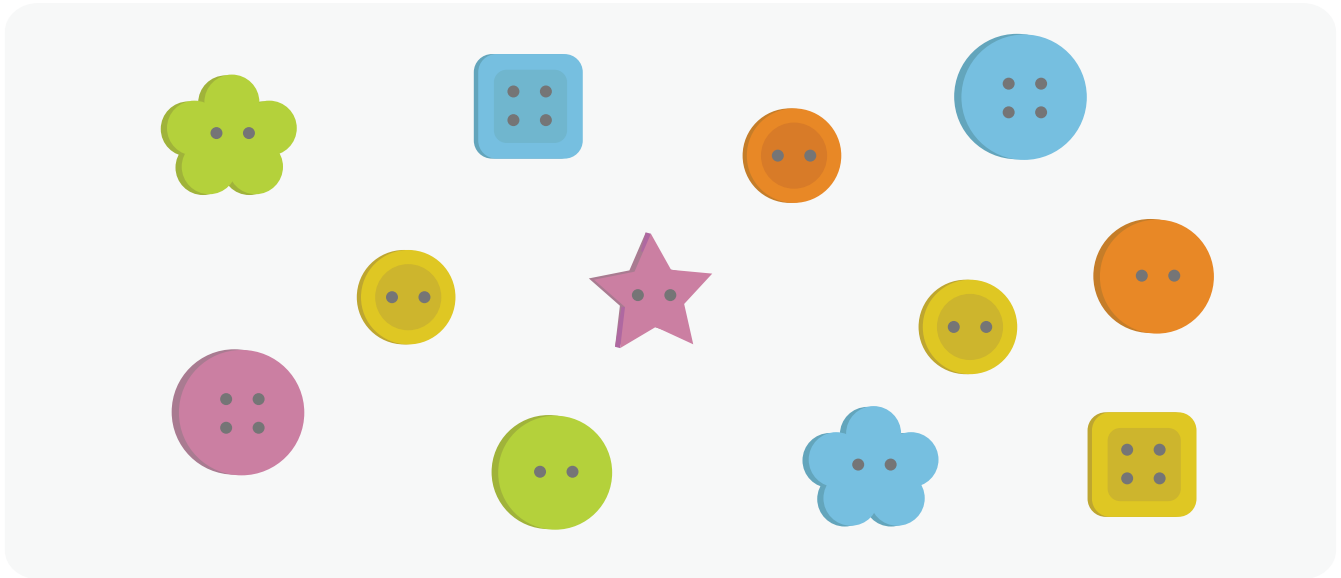


Buttons, Buttons

Use the picture to answer the questions.



What fraction of the buttons are blue? $\frac{3}{12}$

What fraction of the buttons are green? $\frac{2}{12}$

What fraction of the buttons are stars? $\frac{1}{12}$

What fraction of the buttons have 2 holes? $\frac{8}{12}$

What fraction of the buttons are circles? $\frac{7}{12}$

What fraction of the buttons have 4 holes? $\frac{4}{12}$

