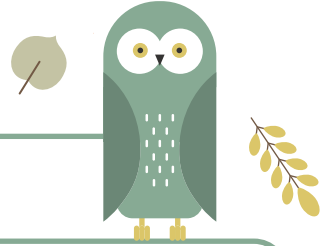


Finding Percentages #1



Find the percentages for the problems below.

What percent of 100 is 45?

45%

What percent of 50 is 5?

10%

What percent of 90 is 27?

30%

What percent of 60 is 15?

25%

What percent of 120 is 18?

15%

What percent of 300 is 162?

54%

What percent of 60 is 57?

95%

What percent of 150 is 12?

8%

What percent of 200 is 125?

62.5%

What percent of 80 is 6?

7.5%