

Ending "D" and "B" Sounds answers

The sound at the end of **bird**



is spelled with the letter **d**.

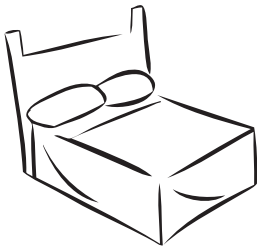
The sound at the end of **tub**



is spelled with the letter **b**.

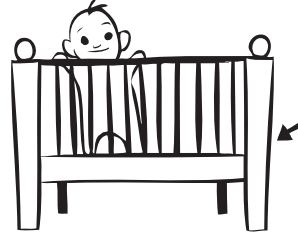
Directions: What do you see in each picture? Say the name of each picture out loud. Decide if the word ends with a **d** sound or a **b** sound. Write the letter.

1.



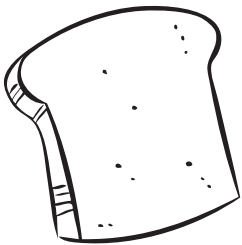
bed

2.



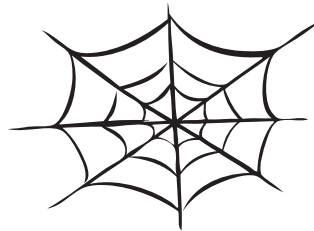
crib

3.



bread

4.



web

5.



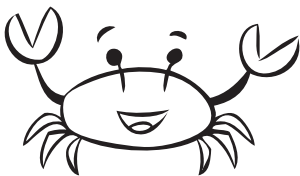
sled

6.



pond

7.



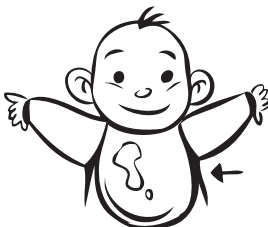
crab

8.



cub

9.



bib

10.



kid