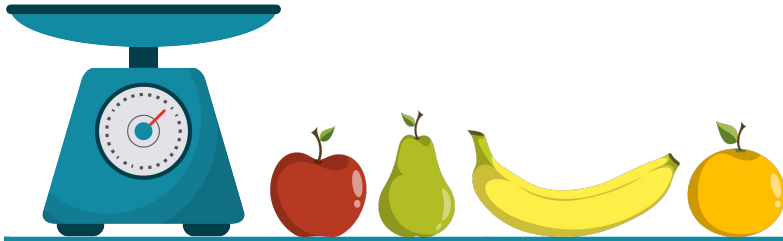


# Convert Customary Units: Weight

Convert each measurement below. You can use the table to the right to help you.



## Customary Units of Weight

1 pound (lb.) = 16 ounces (oz.)

1 ton = 2,000 pounds (lb.)

1. 2 lb. = <u>32</u> oz.	2. 64 oz. = <u>4</u> lb.	3. 6,000 lb. = <u>3</u> tons
4. 160 oz. = <u>10</u> lb.	5. 9 tons = <u>18,000</u> lb.	6. 144 oz. = <u>9</u> lb.
7. 28 lb. = <u>448</u> oz.	8. 30 tons = <u>60,000</u> lb.	9. 27 tons = <u>54,000</u> lb.
10. 97 oz. = <u>6</u> lb. <u>1</u> oz.	11. 6,005 lb. = <u>3</u> tons <u>5</u> lb.	12. 607 oz. = <u>37</u> lb. <u>15</u> oz.
13. 4,800 lb. = <u>2</u> tons <u>800</u> lb.	14. 2,089 lb. = <u>1</u> tons <u>89</u> lb.	15. 832 oz. = <u>52</u> lb.