

# Example Answers Comparing Texts: Separate Traits of a Sub-Genre

Name: \_\_\_\_\_

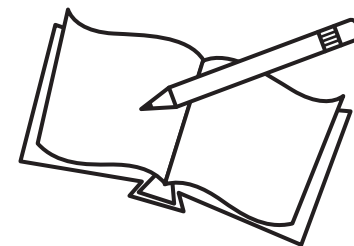
Date: \_\_\_\_\_

A **Genre** is a specific literary category for texts like fiction and nonfiction.

**Sub-genres** are kinds of fiction or nonfiction, with specific traits, or stylish features, unique to each sub-category.

A **sub-genre** of fiction example is mystery, having traits including: unexplained events, sleuths and secrets.

Compare two texts in the same **genre** by noting similarities between two different **traits** of the genre.



Text 1: <b>Alice in Wonderland</b>	Author: <b>Lewis Carroll</b>
Text 2: <b>James and the Giant Peach</b>	Author: <b>Roald Dahl</b>
Genre: <b>Fantasy</b>	
Genre Trait: <b>Magic</b>	
Text 1 Details: <b>Eats different things to make her grow or shrink</b>	Text 2 Details: <b>Peach grows to an enormous size</b>
Genre Trait: <b>Anthropomorphic creatures</b>	
Text 1 Details: <b>There's a talking white rabbit, frog, lizard and other talking animals in the story</b>	Text 2 Details: <b>James speaks with insects who live in the peach</b>