

## Compare and Contrast Texts: Same Sub-Genre

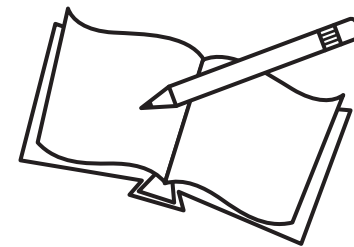
Name: \_\_\_\_\_

Date: \_\_\_\_\_

A **Genre** is a specific literary category for texts like fiction and nonfiction.

**Sub-genres** are kinds of fiction or nonfiction, with specific traits, or stylish features, unique to each sub-category.

A **sub-genre** of fiction example is mystery, having traits including: unexplained events, sleuths and secrets.



Compare two texts in the same **genre** by providing details in the chart below.

<b>Comparison Text Titles</b> 1) <u>Alice in Wonderland</u> 2) <u>Artemis Fowl</u>		<b>Authors</b> 1) <u>Lewis Carroll</u> 2) <u>Eoin Colfer</u>		
<b>Sub-Genre:</b>  <b>Fantasy</b>	<b>Sub-Genre Features:</b> <i>(List two or more traits of the genre)</i> <ul style="list-style-type: none"> <li>• Magic characters</li> <li>• Hi-tech world</li> <li>• Talking animals or objects</li> <li>• Time travel</li> <li>• Exciting adventure</li> <li>• Protagonist with special abilities</li> </ul>	<b>Guest Author Synthesis!</b>  <b>Guest Author:</b> _____ <i>(your name here)</i>  <i>* Propose a third book storyline that would combine both texts into a series of the same sub-genre.</i>		
<b>Shared Trait Details Between Texts:</b>  Both protagonists have extraordinary abilities: Alice changes her size and consciousness by eating weird food. Artemis is a technological mastermind who uses his inventions against others	<b>Detailed Trait Differences Between Texts:</b>  <table style="width: 100%; border: none;"> <tr> <td style="width: 50%; border: none;"> <b>Text 1:</b> <ul style="list-style-type: none"> <li>• Talking animals</li> <li>• Female protagonist</li> <li>• Low-tech of recent historical time (mid 1800s)</li> </ul> </td> <td style="width: 50%; border: none;"> <b>Text 2:</b> <ul style="list-style-type: none"> <li>• Magic characters</li> <li>• Male protagonist</li> <li>• High-tech world of 21st century.</li> </ul> </td> </tr> </table>	<b>Text 1:</b> <ul style="list-style-type: none"> <li>• Talking animals</li> <li>• Female protagonist</li> <li>• Low-tech of recent historical time (mid 1800s)</li> </ul>	<b>Text 2:</b> <ul style="list-style-type: none"> <li>• Magic characters</li> <li>• Male protagonist</li> <li>• High-tech world of 21st century.</li> </ul>	<b>My Storyline:</b>  Holly Short, the captured fairy in Artemis Fowl, escapes and time travels to retrieve Alice from a distant time and place. She enlists Alice and her powerful abilities to shrink, grow and talk to animals to capture Artemis Fowl as an act of revenge. But Holly isn't the only with a powerful ally from Wonderland! Artemis creates a portal to transport the evil Queen of Hearts who has an ability to make heads roll!  <i>(Need more space? Attach additional sheets as needed)</i>
<b>Text 1:</b> <ul style="list-style-type: none"> <li>• Talking animals</li> <li>• Female protagonist</li> <li>• Low-tech of recent historical time (mid 1800s)</li> </ul>	<b>Text 2:</b> <ul style="list-style-type: none"> <li>• Magic characters</li> <li>• Male protagonist</li> <li>• High-tech world of 21st century.</li> </ul>			