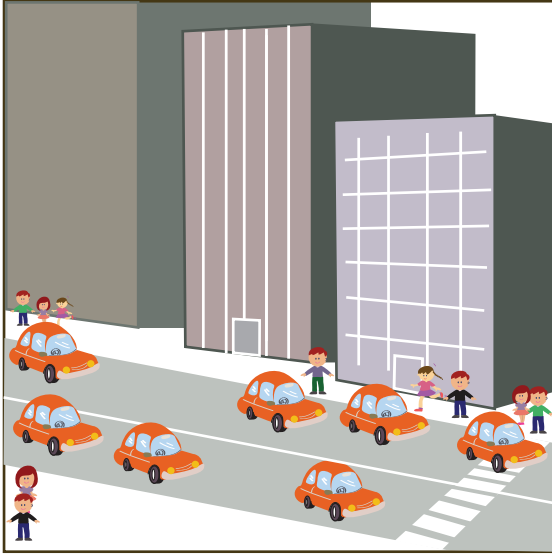


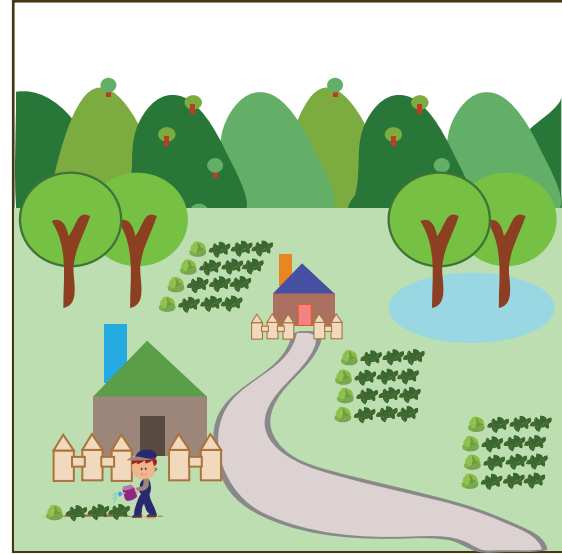
# Answer Key

# Urban & Rural

The picture on the left side shows an urban setting. The picture on the right shows a rural setting. Write two sentences comparing and contrasting these areas on the lines below.



Urban



Rural

## Differences

Student answers will vary, but should include observations about the size of the buildings, the number of cars, the amount of green space, plants, and trees, as well as the number of people.

## Similarities

Student answers will vary, but may include observations that people can be found in both urban and rural areas, that both contain buildings, and that in both places people spend time outdoors and indoors.