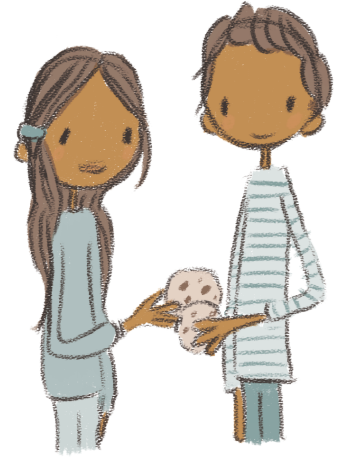


# Comparative and Superlative Adjectives

A **comparative adjective** is used for comparing two people or things.

A **superlative adjective** is used for comparing three or more people or things.



**Adjective:** tall    **Comparative:** taller    **Superlative:** tallest

1. Use the correct forms of the adjective “large” in the sentence below.

Ana’s cookie is larger than her brother’s cookie, but their father took the largest cookie from the jar.

2. Use the correct forms of the adjective “cheap” in the sentence below.

This book is cheap, but that book is cheapest.

3. Use the correct forms of the adjective “long” in the sentence below.

Her hair is longer than it was last year, and now it is the longest of anyone in her class.

4. Use the correct forms of the adjective “thin” in the sentence below.

Mom makes thinner pancakes than Dad does, but Grandma makes the thinnest of all.

5. Use the correct forms of the adjective “cold” in the sentence below.

It was colder than usual in Mrs. Clarke’s classroom, but it felt the coldest in Mr. Hammond’s classroom.