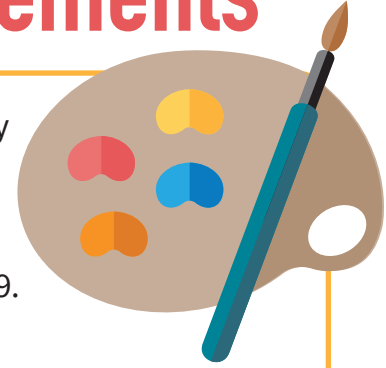


# Commas With Nonrestrictive Elements



A **restrictive** element is information that is necessary for a reader to identify exactly who or what is being discussed. This information is not set off by commas in a sentence.

Vincent van Gogh's painting *The Starry Night* was completed in June of 1889.  
*The underlined text is necessary to identify which of Vincent van Gogh's paintings is being discussed.*

A **nonrestrictive** element is supplemental information; it is not necessary for a reader to identify who or what is being discussed. You could remove the information from the sentence, and the meaning of the sentence would still be clear. Nonrestrictive information is set off by commas.

Vincent van Gogh, the renowned Dutch artist, painted *The Starry Night* in 1889.  
*The underlined text is not necessary to identify who Vincent van Gogh is.*

**Read each sentence below. Underline the restrictive or nonrestrictive element in each sentence. Add commas if needed.**

1. Scarlet, who is known for her tap-dancing abilities, blew the judges away at the talent show.
2. African American entrepreneur Madam C.J. Walker was America's first self-made female millionaire.
3. New York City, which is also called "The Big Apple," is an amazing place to visit.
4. Sadly, the player who has scored most of our goals will be out the rest of the season with a knee injury.
5. When learning to surf, head to a part of the beach that has slower and calmer waves.
6. Hot air balloons are able to float because hot air, which is less dense than cool air, rises and lifts the balloon upwards.
7. The ancient Incan city Machu Picchu sits over 7,000 feet above sea level in the Andes Mountains of Peru.
8. Felix was delighted to finally meet the woman whose books had influenced so much of his childhood.
9. Hendrick, my lovable but destructive little brother, accidentally broke a dozen eggs when he dropped them on the kitchen floor.
10. Mr. Webb, our history teacher, likes showing movies to help us learn about the past.