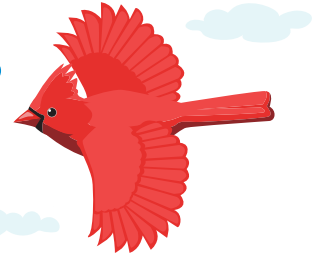


Choose Variable Expressions to Model Word Problems



Circle the expression that matches each scenario.

1. Eli is birdwatching and sees c cardinals in a tree. After a gust of wind, 4 of the cardinals fly away. Circle the expression that shows the number of cardinals left in the tree.

c

$c - 4$

$c + 4$

4

2. Sadie has g songs on her playlist. Ethan has 5 times as many songs on his playlist. Circle the expression that shows the number of songs on Ethan's playlist.

$5g$

$g + 5$

5

g

3. At Jayden's basketball game, he scored p points before halftime. He scored 8 points after halftime. Circle the expression that shows the total number of points Jayden scored during the entire game.

$p - 8$

p

8

$p + 8$

4. There are f fish in Santiago's aquarium, $\frac{1}{3}$ of which are guppies. Circle the expression that shows the number of fish in Santiago's aquarium that are guppies.

$3f$

$\frac{1}{3}f$

$f + \frac{1}{3}$

$f - \frac{1}{3}$

5. Lewis spent d dollars on 4 concert tickets for a group of his friends. Each ticket cost the same amount. Circle the expression that shows the cost of one concert ticket.

$4 \div d$

$4d$

$d \div 4$

$d - 4$

6. Gia scored p points in round one of her video game, *Grand Quest*. In round two, she had double the amount of points that she scored in round one, but then she lost 10 points due to a time penalty. Circle the expression that shows the total number of points Gia had at the end of round two.

$2p - 10$

$p + 12$

$2p + 10$

$p - 8$

7. Kim spent \$8 for admission to the fair. She then bought t sheets of ride tickets for \$4 each. Circle the expression that shows the total amount of money Kim spent at the fair.

$8 - 4t$

$8t + 4$

$8 + 4t$

$12t$