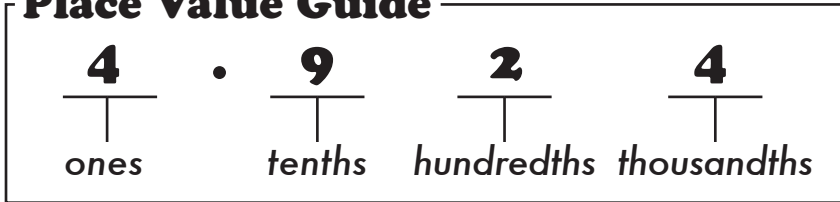




Rounding off to a decimal place is like giving a number a little trim. Round each decimal off to the place shown. Remember, if the number you are rounding off is 5 or more, round up. If it is 4 or less, round down.



**Place Value Guide**



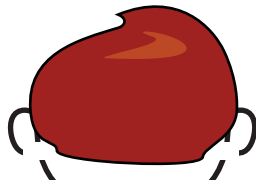
**Hundredths**

2.15531



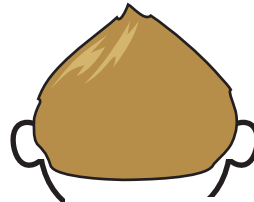
2.16

90.10539



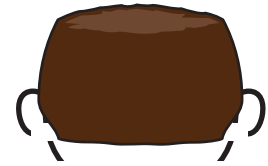
90.11

0.87321



0.87

21.24621



21.25

**Thousandths**

51.02351



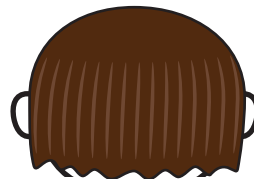
51.024

3.08542



3.085

8.36055



8.361

18.53204



18.532

**Mixed**

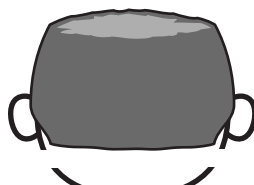
6.29321



6.29

Hundredths

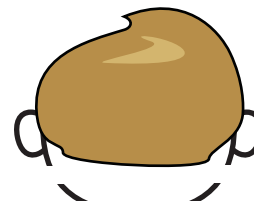
50.78612



50.786

Thousandths

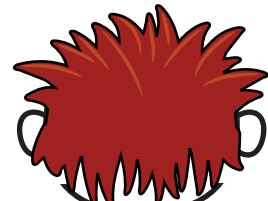
0.88953



0.890

Thousandths

4.69502



4.70

Hundredths