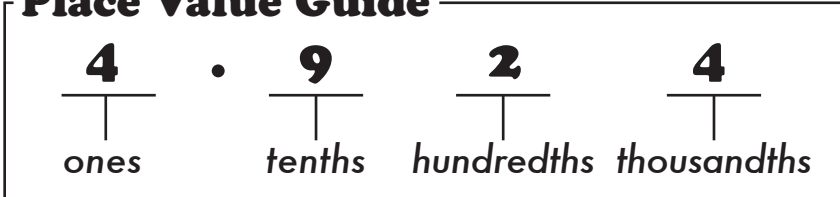




Rounding off to a decimal place is like giving a number a little trim. Round each decimal off to the place shown. Remember, if the number you are rounding off is 5 or more, round up. If it is 4 or less, round down.

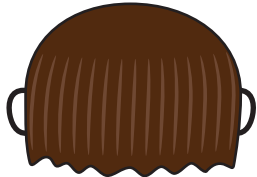


Place Value Guide



Hundredths

25.12352₁



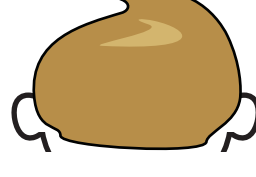
25.12

2.15483₁



2.15

64.8950₂



64.90

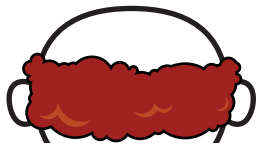
3.2100₂



3.21

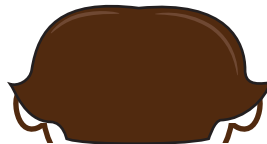
Thousandths

453.2019₁



453.202

12.25136



12.251

213.1561₂



213.156

18.25923



18.259

Mixed

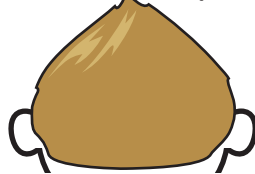
31.24539



31.25

Hundredths

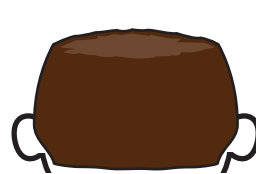
46.25132



46.251

Thousandths

6.21059



6.21

Hundredths

18.28902



18.289

Thousandths