

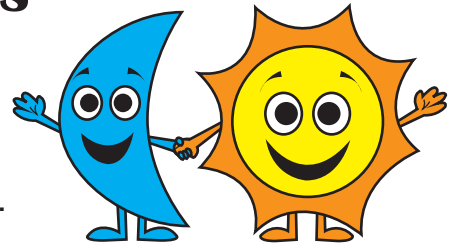
Name: _____

Date: _____

Answers

Awesome Analogies

Analogies compare two things that are mostly different, but share some of the same traits. These analogies are like puzzles. To understand an analogy, think about how the words on each side of the colons relate to each other.



moon : night :: sun : day

The colons represent words, so when you read it aloud, it says: *moon is to night as sun is to day*. In this case, the relationship described is what you see in the night sky versus what you see during the day.

Directions: Use the word bank to complete the analogies.

1. feather : bird :: fur : dog
2. gas : car :: electricity : television
3. kitchen : oven :: bedroom : bed
4. bow : arrow :: bat : ball
5. near : far :: on : off
6. gray : black :: pink : red
7. scissors : cut :: pencil : write
8. calf : cow :: fawn : deer
9. sing : sang :: sit : sat
10. wolf : pack :: fish : school

Word Bank

pink
bat
sit
kitchen
pack
bird
cow
television
off
scissors

Possible Answers

Directions: Write your own analogies to compare each of the following things.

11. student, teacher student : learning :: teacher : teaching

12. car, boat car : road :: boat : water