

# Before a Noun 1

Circle the correct **article** that goes before each word.

An **article** is a word that goes before a noun.

**A**, **an**, and **the** are articles.

If the noun begins with a consonant sound, use **a** or **the**.

If the noun begins with a vowel sound, use **an** or **the**.

Most of the time, if the noun is plural, use **the**.



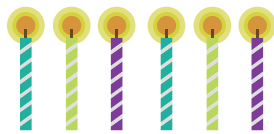
a **an** apple



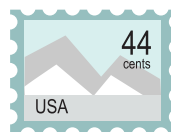
**the** an cheese



a an flower



an **the** candles



a an stamp



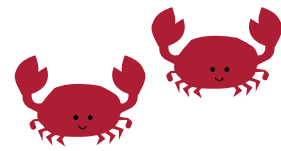
a an owl



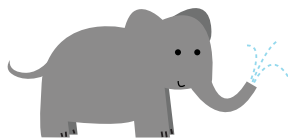
a an mask



a an umbrella



a **the** crabs



a an elephant



a an bird



a an equal sign