

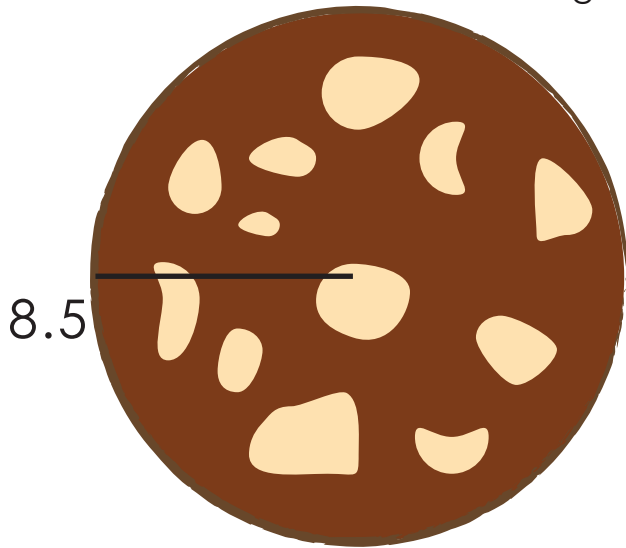
COOKIE CIRCLES

Area, Circumference, Diameters

Fill in the missing information about these cookies!

Formulas:

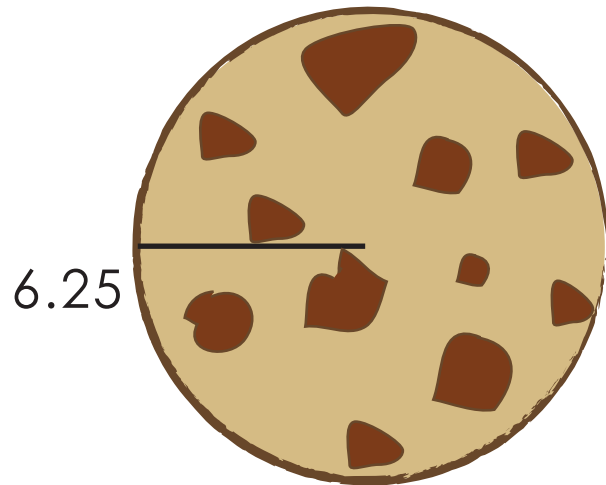
Diameter = (2)(radius) **Circumference** = $(\pi)(\text{diameter})$ **Area** = πr^2
 For this assignment please use $\pi=3.14$



diameter: 17

circumference: 53.38

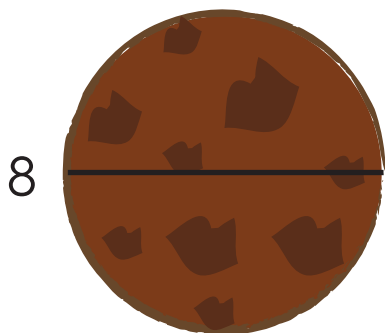
area: 226.865



diameter: 12.5

circumference: 39.25

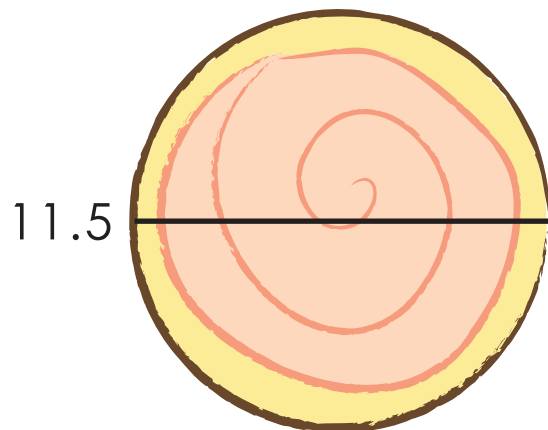
area: 122.65625



radius: 4

circumference: 25.12

area: 50.24



radius: 5.75

circumference: 36.11

area: 103.81625