

Adjective Word Scramble

Unscramble each group of letters to make adjectives. Some of the spaces are marked with special symbols. Group those letters together in the chart below. Then, unscramble each group of words to form adjectives. Complete the sentence with the adjectives from the chart.

TPYRET P R E T T Y
★ ◆

ENGRE G R E E N
★ ★

IQEUT Q U I E T
◆ ★

LYEMLS S M E L L Y
★ ◆ ●

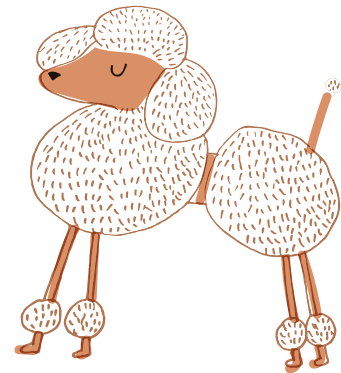
RADK D A R K

ASEGRY G R E A S Y
◆

OURS S O U R
◆ ●

ODUL L O U D
★ ●

GNACRHIS C R A S H I N G
● ◆



Shape	Scrambled Word	Unscrambled Word
★	EGNTEL	GENTLE
●	LOOC	COOL
◆	TILESN	SILENT

The gentle dog drank the cool water in the silent yard.
★ ● ◆