

Show Me the Money

5th
Grade



The image features a central illustration of a hand in a blue and white striped suit sleeve holding a stack of green money bills. The background is a vibrant orange and yellow sunburst pattern. Scattered around the hand are several green dollar signs (\$). Three math problems are displayed on the page:

Top left:
\$
$$\begin{array}{r} + \$5,632.15 \\ + \$2,010.37 \\ \hline \end{array}$$

Middle left:
\$
$$\begin{array}{r} + \$4,257.16 \\ + \$3,547.47 \\ \hline \end{array}$$

Bottom left:
\$
$$\begin{array}{r} - \$8,743.22 \\ - \$6,417.58 \\ \hline \end{array}$$

Top right:
\$
$$\begin{array}{r} \$6,579.68 \\ - \$1,325.25 \\ \hline \end{array}$$

Table of Contents

Show Me the Money

Ricky's Savings Points *
Tips *
Waiter's Tip *
Add Up to Savings *
In the Party *
Online Shopping *
Place an Order *
Let's Recycle *
Price Per Unit *
Back to School *
Commission #1 *
Commission #2 *
Sales Tax *
Show Me the Money *

Certificate of Completion
Answer Sheets

** Has an Answer Sheet*

Ricky's Savings Points

Ricky started a savings account. The bank gave him a good deal. The more money he puts in, the more points he will earn. The rate appears below.

$$2m + 5 = \text{Savings points}$$

The letter m represents the amount of money he puts in.

If in January, Ricky puts in \$6, the number of savings points he will earn that month is

$$2(6) + 5 = \text{Savings points}$$

$$12 + 5 = \text{Savings points}$$

$$\text{Savings points} = 17$$



Find the savings points of each month below.

February: Ricky put in \$4.

Savings points =

March: Ricky put in \$8

Savings points =

April: Ricky put in \$7

Savings points =

May: Ricky put in \$3.

Savings points =

June: Ricky put in \$9

Savings points =

July: Ricky put in \$2

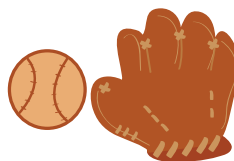
Savings points =

Look at the rewards below. Circle the one that Ricky can earn from his saving points from February to July.

30 to 60 points



61 to 90 points



91 to 120 points



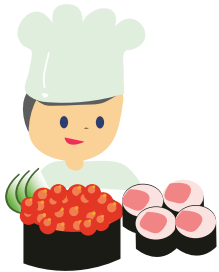
Tips

When we buy a service, we usually give out tips. Tips can vary depending on how satisfied we are with the service. Find the tips and show your work.

1. Rosie orders dessert at the cafe. The total bill is \$50. She tips the waiter 10%. How much money does the waiter get?



2. Daniel orders sushi from the sushi restaurant. The total bill is \$80. He tips the sushi chef 20%. How much money does the sushi chef get?



3. Judy took a taxi. The meter said \$45. She tips the driver 15%. How much money does the driver get in tips?



Challenge

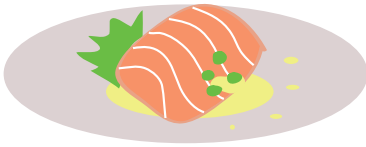
- Robby took his dog to the pet grooming store. The service costs \$30. He tips the groomer 25%. How much in *total* does the groomer get?



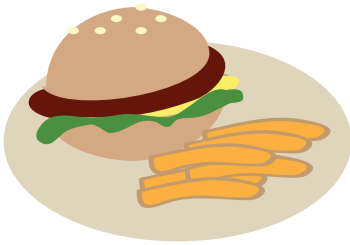
Waiter's Tip

At the Yum Yum cafe, the waiters are counting their tips.
Help them by answering the following questions.

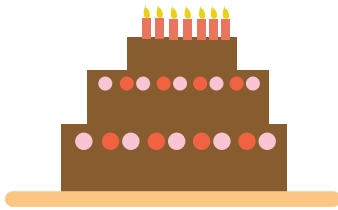
1. Daniel served dinner for table 14. The check came to \$100. The customers tipped him 25%. How much was his tip?



2. Sammy served lunch for table 7. The total came to \$55. The customers gave a 15% tip to Sammy. How much was his tip?



3. Kat served dessert for table 3. The total cost was \$20. The customers gave a tip of 12% to Kat. How much was her tip?



Challenge

At the Yum Yum cafe, the waiters combine their tips and divide the total by the number of waiters. Today's tip total is \$132, and three waiters are working. How much money in tips does each waiter get?



5th
Grade

Add Up To Savings!

6 Digits Addition with Decimals

Add the dollar amounts. Then answer the question below.

$$\begin{array}{r} \$5,632.15 \\ + \$2,010.37 \\ \hline \end{array}$$



$$\begin{array}{r} \$4,257.16 \\ + \$3,547.47 \\ \hline \end{array}$$

$$\begin{array}{r} \$4,301.24 \\ + \$2,376.89 \\ \hline \end{array}$$

$$\begin{array}{r} \$7,004.54 \\ + \$1,557.01 \\ \hline \end{array}$$

$$\begin{array}{r} \$6,168.35 \\ + \$2,015.78 \\ \hline \end{array}$$

$$\begin{array}{r} \$7,495.13 \\ + \$1,226.84 \\ \hline \end{array}$$

Joe saved \$6,821.75 last month. This month he saved \$2,139.35. How much has he saved in total?



In The Party

The total price can be found by multiplying the number of items by the cost. Answer the questions below and show your work.

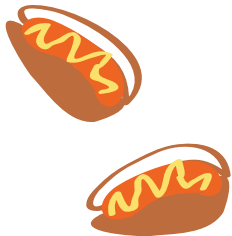
1. Erika is ordering cupcakes for her party. One cupcake costs \$3. There will be 20 guests at the party, and she wants each guest to get one cupcake. How much will she spend on cupcakes?



-
2. James bought 30 cans of soda. Each can costs \$0.50. How much did he pay?



-
3. A teacher bought 25 hotdogs for his students. Each one costs \$4. How much did the teacher pay?



Challenge

Jillian ordered sushi for the party. The egg sushi costs \$1 each. She ordered 20 of them. The salmon sushi costs \$2 each. She ordered 30 of them. The tuna roll costs \$0.50 each. She ordered 50 of them. How much in total did she pay?



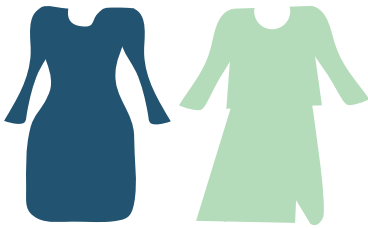
Online Shopping

When you place an order online, there is a shipping fee. Help the shoppers below figure out their shipping fees.

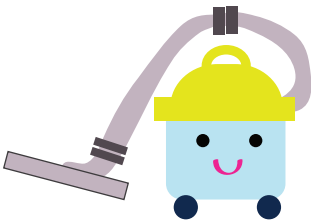
1. Alisa ordered a handbag that costs \$50. The shipping fee is 12%. How much will she pay in total?



2. Joy ordered two dresses. The first one costs \$200 and the second one costs \$150. The shipping fee is 10%. How much will she pay in total?

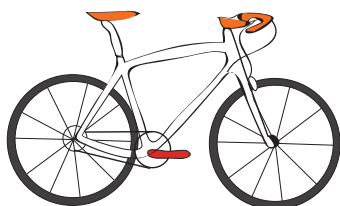


3. Jenn ordered a vacuum cleaner which cost \$180. The shipping fee is 7%. How much will she pay in total?



Challenge

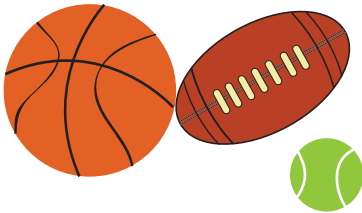
Roy wants to order a bicycle. The red bicycle costs \$300. The shipping fee is 5%. The blue bicycle costs \$350, and the shipping fee is 2%. What bicycle should Roy order so the total price is cheaper?



Place An Order

When you place an order online, there is a shipping fee. Help the shoppers below figure out their shipping fees.

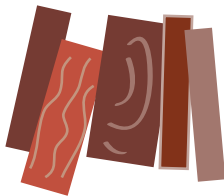
1. Tim ordered sports supplies. The purchase price is \$250. The shipping fee is 3%. How much will Tim pay in total?



2. Ricky ordered 10 cans of paint. The purchase price is \$330. The shipping fee is 4%. How much will Ricky pay in total?



3. Nate ordered wood supplies. The purchase price is \$640. The shipping fee is 5%. How much will Nate pay in total?



Challenge

Bob wants to get a box of nuts and bolts. If he orders from Billy's Hardware, it costs \$50 and the shipping fee is 6%. If he orders from Pops ToolShop, it costs \$55 and the shipping fee is 4%. Which store should Bob order from so the total price is cheaper?



Let's Recycle

Andy collects plastic bottles, soda cans and paper bags for recycling. The recycling machine will give change back (in cents). The rates appear below.



$$p + 4 = \text{cents}$$



$$(s + 10)2 = \text{cents}$$



$$3b = \text{cents}$$

The letter p represents the number of plastic bottles he puts in.

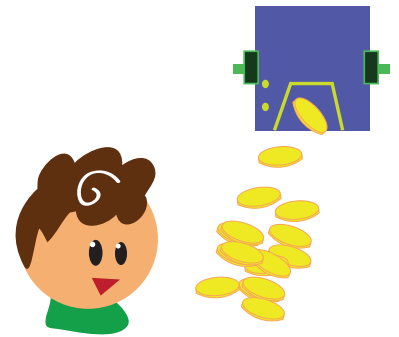
The letter s represents the number of soda cans he puts in.

The letter b represents the number of paper bags he puts in.

Find the total amount of change Andy will get if he puts these items in the machine. See the example.

On Monday, Andy put 10 plastic bottles, 4 soda cans, and 5 paper bags into the machine.

- Change from the plastic bottle = $p + 4$, $p = 10$
Change from the plastic bottle = $10 + 4 = 14$ cents
- Change from the soda cans = $(s + 10)2$, $s = 4$
Change from the soda cans = $(4 + 10)2 = (14)2 = 28$ cents
- Change from the paper bags = $3b$, $b = 5$
Change from the paper bags = $3(5) = 15$ cents



Andy gets $14 + 28 + 15 = 57$ cents (\$0.57) from the recycling machine.

On Wednesday, Andy put in 8 plastic bottles, 12 soda cans, and 7 paper bags into the machine.

On Friday, Andy put in 25 plastic bottles, 18 soda cans, and 9 paper bags into the machine.

How much money would Andy get in total from Wednesday and Friday?

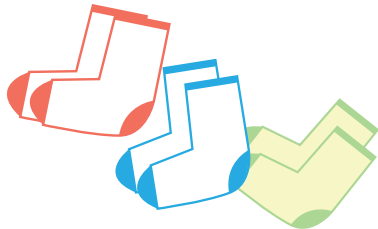
Price Per Unit

Find the price of each individual item in the packages below. Show your work.

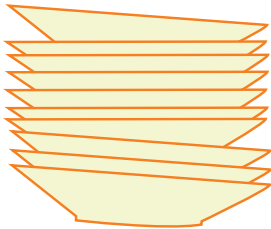
1. A pack of toothbrushes costs \$16. There are 4 toothbrushes in the pack. How much does each toothbrush cost?



-
2. A dozen pairs of socks costs \$60. How much does each pair cost?



-
3. A set of dishes costs \$80. There are 10 dishes in the set. How much does each dish cost?



Challenge

Roxi wants a set of markers. One set of 3 markers costs \$12. Another set of 5 markers costs \$15. Which one is a better deal?



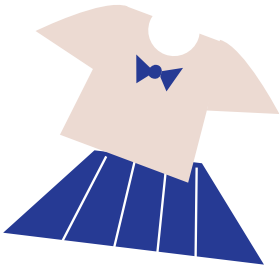
Back To School

The total price can be found by multiplying the number of items by the cost. Answer the questions below and show your work.

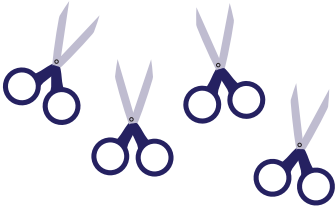
1. Meg bought 20 pairs of socks. Each pair costs \$3. How much did she pay?



-
2. Liz bought 5 school uniforms. Each uniform cost \$100. How much did she pay?

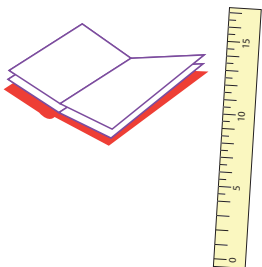


-
3. Darris bought 4 scissors and 2 glue sticks. Each scissor cost \$5 and each glue stick cost \$1. How much did he pay?



Challenge

Emily bought 5 notebooks, 10 pencils, 5 markers, and 2 rulers. Each notebook and each ruler cost \$3. Each pencil cost \$0.20 and each marker cost \$2. How much did Emily pay?



Commission #1

Commission is a percentage of the product sale price. If a product sale price is \$100, and the commission is 10%, a salesperson will get \$10 in commission. Find out the commission of each salesperson below.

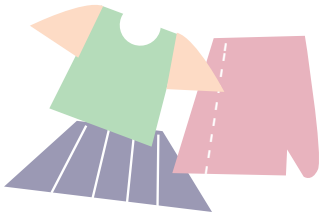
1. Mitsy sold a diamond ring. The sale price is \$5,000. The commission is 1%. How much commission will she get?



-
2. Jordan sold a camera. The sale price is \$200. The commission is 5%. How much commission will he get?



-
3. Andrea sells women's clothing. Today she sold a total of \$400. The commission is 7%. How much commission will she get?



Challenge

Ashley sells women's lipstick. She gets \$15 per hour. Today she worked 5 hours and sold \$50 in lipstick. The commission is 3%. How much money did she make today?



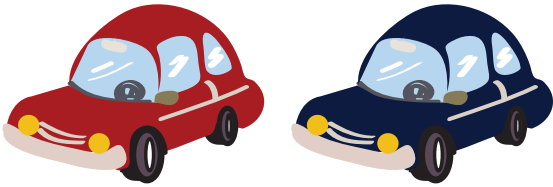
Commission #2

Commission is a percentage of the product sale price. If a product sale price is \$100, and the commission is 10%, a salesperson will get \$10 in commission. Find out the commission of each salesperson below.

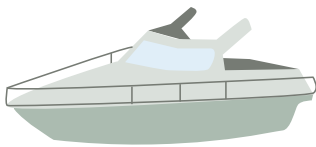
1. Today Troy sold a \$500 flat screen television and a \$600 refrigerator. The commission for selling a television is 2% and 3% for selling a refrigerator. How much commission did Troy earn today?



2. Peter sold two cars today. The red car costs \$10,000 and he will get 1% commission. The blue car costs \$12,000 and he will get 2% commission. How much commission will Peter get from selling these two cars?

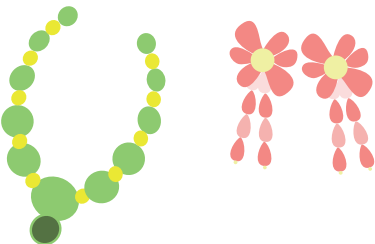


3. Donna sold a boat. The price is \$50,000. Her commission is 0.1%. How much commission will she get?



Challenge

Rosie sold an emerald necklace that cost \$7,500 and she will get 1% commission. She sold ruby earrings that cost \$2,000 and she will get 4% commission. Which piece of jewelry gives her more commission?



Sales Tax

Sales tax is different in each state. Find the sales tax each person will pay. Show your work.

1. Ruby bought some clothes that cost \$50. Sales tax in her state is 10%.
How much is the sales tax.



-
2. April bought a handbag that costs \$20. Sales tax in her state is 7%.
How much is the sales tax?

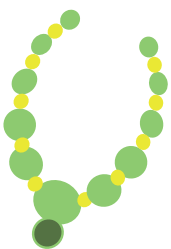


-
3. Ryan bought a surfboard that costs \$200. Sales tax is 12%.
How much is the sales tax?



Challenge

- Neil bought a necklace that costs \$100. Sales tax is 7.5%.
How much will he pay *total*?



5th
Grade

Show Me the Money!

6 Digits Subtraction with Decimals

Subtract the dollar amounts. Then answer the question below.



$$\begin{array}{r} \$8,743.22 \\ - \$6,417.58 \\ \hline \end{array}$$

$$\begin{array}{r} \$6,579.68 \\ - \$1,325.25 \\ \hline \end{array}$$



$$\begin{array}{r} \$7,632.19 \\ - \$7,321.71 \\ \hline \end{array}$$

$$\begin{array}{r} \$3,221.37 \\ - \$1,005.61 \\ \hline \end{array}$$

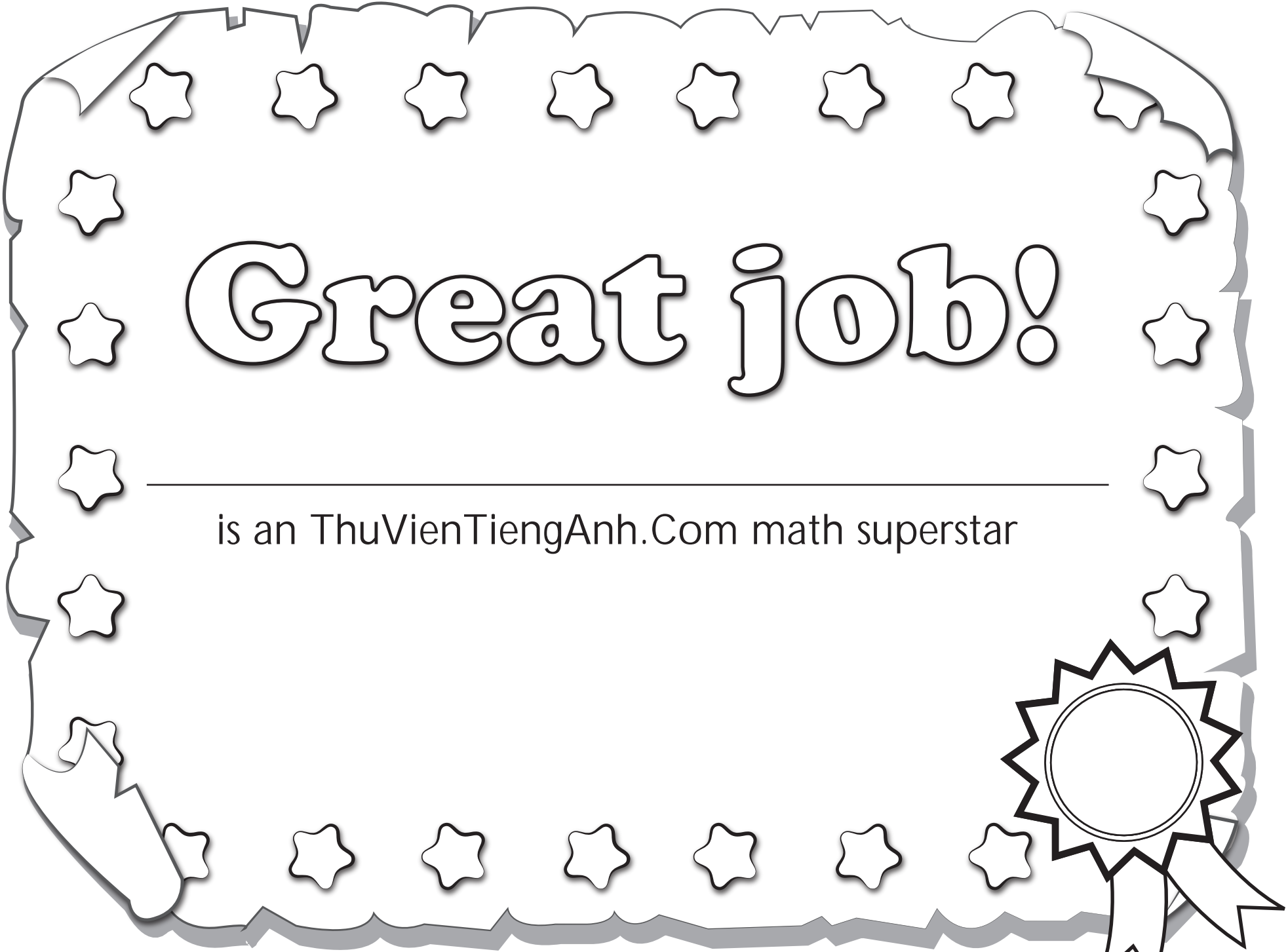


$$\begin{array}{r} \$5,507.34 \\ - \$3,234.87 \\ \hline \end{array}$$

$$\begin{array}{r} \$9,545.47 \\ - \$4,189.92 \\ \hline \end{array}$$

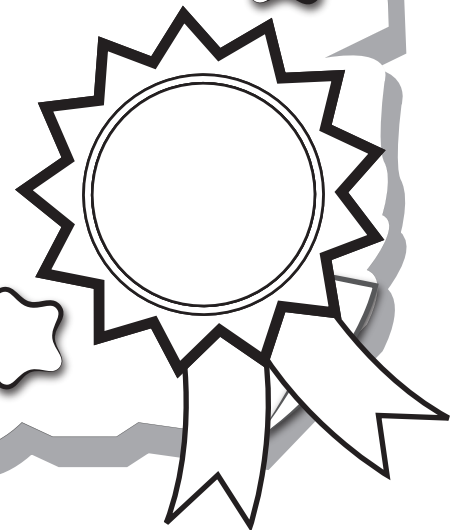
Kenny earned \$9,433.05 last November. He spent \$5,207.15 on Christmas presents. How much does he have left?





Great job!

is an ThuVienTiengAnh.Com math superstar



Answer Sheets

Show Me the Money

Ricky's Savings Points

Tips

Waiter's Tip

Add Up to Savings

In the Party

Online Shopping

Place an Order

Let's Recycle

Price Per Unit

Back to School

Commission #1

Commission #2

Sales Tax

Show Me the Money

Answer Sheet



Ricky's Savings Points

Ricky started a savings account. The bank gave him a good deal. The more money he puts in, the more points he will earn. The rate appears below.

$$2m + 5 = \text{Savings points}$$

The letter m represents the amount of money he puts in.

If in January, Ricky puts in \$6, the number of savings points he will earn that month is

$$2(6) + 5 = \text{Savings points}$$

$$12 + 5 = \text{Savings points}$$

$$\text{Savings points} = 17$$



Find the savings points of each month below.

February: Ricky put in \$4.

$$2(4) + 5 = \text{Savings points}$$

$$8 + 5 = \text{Savings points}$$

$$\text{Savings points} = 13$$

March: Ricky put in \$8

$$2(8) + 5 = \text{Savings points}$$

$$16 + 5 = \text{Savings points}$$

$$\text{Savings points} = 21$$

April: Ricky put in \$7

$$2(7) + 5 = \text{Savings points}$$

$$14 + 5 = \text{Savings points}$$

$$\text{Savings points} = 19$$

May: Ricky put in \$3.

$$2(3) + 5 = \text{Savings points}$$

$$6 + 5 = \text{Savings points}$$

$$\text{Savings points} = 11$$

June: Ricky put in \$9

$$2(9) + 5 = \text{Savings points}$$

$$18 + 5 = \text{Savings points}$$

$$\text{Savings points} = 23$$

July: Ricky put in \$2

$$2(2) + 5 = \text{Savings points}$$

$$4 + 5 = \text{Savings points}$$

$$\text{Savings points} = 9$$

Look at the rewards below. Circle the one that Ricky can earn from his saving points from February to July.

Total Savings points = 96

30 to 60 points



61 to 90 points



91 to 120 points



Answer Sheet

5th
Grade

!"#\$

Tips

When we buy a service, we usually give out tips. Tips can vary depending on how satisfied we are with the service. Find the tips and show your work.

1. Rosie orders dessert at the cafe. The total bill is \$50. She tips the waiter 10%. How much money does the waiter get?



The waiter gets \$5.

2. Daniel orders sushi from the sushi restaurant. The total bill is \$80. He tips the sushi chef 20%. How much money does the sushi chef get?



The sushi chef gets \$16.

3. Judy took a taxi. The meter said \$45. She tips the driver 15%. How much money does the driver get in tips?



The driver gets \$6.75 in tips.

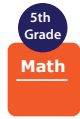
Challenge

- Robby took his dog to the pet grooming store. The service costs \$30. He tips the groomer 25%. How much in *total* does the groomer get?



The groomer gets \$37.50 in total.

Answer Sheet



Waiter's Tip

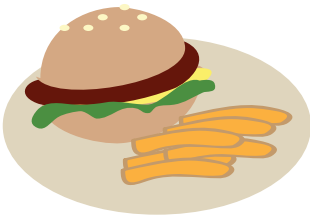
At the Yum Yum cafe, the waiters are counting their tips. Help them by answering the following questions.

1. Daniel served dinner for table 14. The check came to \$100. The customers tipped him 25%. How much was his tip?



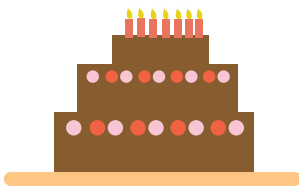
$$\text{Tip earned by Daniel} = \frac{100 \times 25}{100} = \$25$$

2. Sammy served lunch for table 7. The total came to \$55. The customers gave a 15% tip to Sammy. How much was his tip?



$$\text{Tip earned by Sammy} = \frac{55 \times 15}{100} = \$8.25$$

3. Kat served dessert for table 3. The total cost was \$20. The customers gave a tip of 12% to Kat. How much was her tip?



$$\text{Tip earned by Kat} = \frac{20 \times 12}{100} = \$2.40$$

Challenge

At the Yum Yum cafe, the waiters combine their tips and divide the total by the number of waiters. Today's tip total is \$132, and three waiters are working. How much money in tips does each waiter get?



$$\text{Tip earned by each waiter} = \frac{132}{3} = \$44$$

Answer Sheet

ANSWER SHEET

5th
Grade

Add Up To Savings!

6 Digits Addition with Decimals

Add the dollar amounts. Then answer the question below.

$$\begin{array}{r} \$5,632.15 \\ + \$2,010.37 \\ \hline \$7,642.52 \end{array}$$



$$\begin{array}{r} \$4,257.16 \\ + \$3,547.47 \\ \hline \$7,804.63 \end{array}$$

$$\begin{array}{r} \$4,301.24 \\ + \$2,376.89 \\ \hline \$6,678.13 \end{array}$$

$$\begin{array}{r} \$7,004.54 \\ + \$1,557.01 \\ \hline \$8,561.55 \end{array}$$

$$\begin{array}{r} \$6,168.35 \\ + \$2,015.78 \\ \hline \$8,184.13 \end{array}$$

$$\begin{array}{r} \$7,495.13 \\ + \$1,226.84 \\ \hline \$8,721.97 \end{array}$$

Joe saved \$6,821.75 last month. This month he saved \$2,139.35. How much has he saved in total?

\$8,961.10



Answer Sheet



In The Party

Practice
Finding
Totals

ANSWER SHEET

The total price can be found by multiplying the number of items by the cost. Answer the questions below and show your work.

1. Erika is ordering cupcakes for her party. One cupcake costs \$3. There will be 20 guests at the party, and she wants each guest to get one cupcake. How much will she spend on cupcakes?



$$20 \times 3 = 60$$

She will spend \$60 on cupcakes.

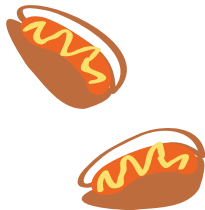
2. James bought 30 cans of soda. Each can costs \$0.50. How much did he pay?



$$30 \times 0.50 = 15$$

He paid \$15 for the soda cans.

3. A teacher bought 25 hotdogs for his students. Each one costs \$4. How much did the teacher pay?



$$25 \times 4 = 100$$

The teacher paid \$100 for the hotdogs.

Challenge

Jillian ordered sushi for the party. The egg sushi costs \$1 each. She ordered 20 of them. The salmon sushi costs \$2 each. She ordered 30 of them. The tuna roll costs \$0.50 each. She ordered 50 of them. How much in total did she pay?



$$\text{Egg sushi } 20 \times 1 = 20$$

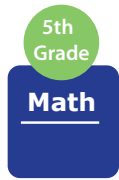
$$\text{Salmon sushi } 30 \times 2 = 60$$

$$\text{Tuna roll } 50 \times 0.50 = 25$$

$$\text{Total cost } \$20 + \$60 + \$25 = \$105$$

She paid \$105 in total.

Answer Sheet



ANSWER SHEET

Online Shopping

When you place an order online, there is a shipping fee. Help the shoppers below figure out their shipping fees.

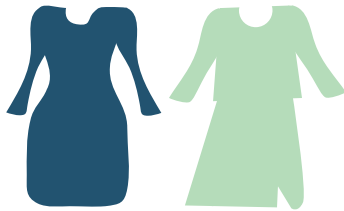
1. Alisa ordered a handbag that costs \$50. The shipping fee is 12%. How much will she pay in total?



$$\text{Shipping fee} = \frac{50 \times 12}{100} = 6$$

$$\text{Total} = 50 + 6 = \$56$$

2. Joy ordered two dresses. The first one costs \$200 and the second one costs \$150. The shipping fee is 10%. How much will she pay in total?

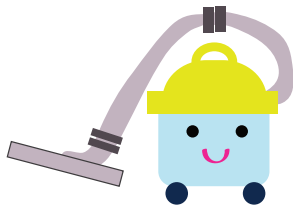


$$\text{Shipping fee} = \frac{(200+150) \times 10}{100}$$

$$\frac{350 \times 10}{100} = 35$$

$$\text{Total} = 350 + 35 = \$385$$

3. Jenn ordered a vacuum cleaner which cost \$180. The shipping fee is 7%. How much will she pay in total?

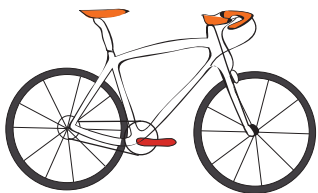


$$\text{Shipping fee} = \frac{180 \times 7}{100} = 12.6$$

$$\text{Total} = 180 + 12.6 = \$192.60$$

Challenge

Roy wants to order a bicycle. The red bicycle costs \$300. The shipping fee is 5%. The blue bicycle costs \$350, and the shipping fee is 2%. What bicycle should Roy order so the total price is cheaper?



$$\text{red bicycle shipping fee} = \frac{300 \times 5}{100} = 15$$

$$\text{Total cost} = 300 + 15 = \$315$$

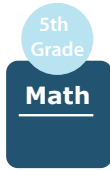
$$\text{blue bicycle shipping fee} = \frac{350 \times 2}{100} = 7$$

$$\text{Total cost} = 350 + 7 = \$357$$

Roy should order the red bicycle.

Answer Sheet

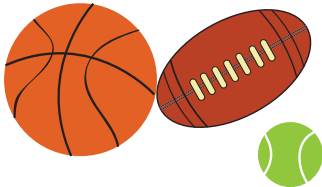
ANSWER SHEET



Place An Order

When you place an order online, there is a shipping fee. Help the shoppers below figure out their shipping fees.

1. Tim ordered sports supplies. The purchase price is \$250. The shipping fee is 3%. How much will Tim pay in total?



$$\text{Shipping fee } \frac{250 \times 3}{100} = 7.5$$

$$\text{Total} = 250 + 7.5 = \$257.5$$

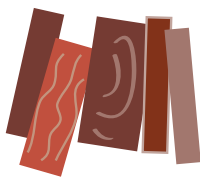
2. Ricky ordered 10 cans of paint. The purchase price is \$330. The shipping fee is 4%. How much will Ricky pay in total?



$$\text{Shipping fee } \frac{330 \times 4}{100} = 13.20$$

$$\text{Total} = 330 + 13.20 = \$343.2$$

3. Nate ordered wood supplies. The purchase price is \$640. The shipping fee is 5%. How much will Nate pay in total?

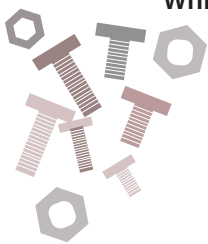


$$\text{Shipping fee } \frac{640 \times 5}{100} = 32$$

$$\text{Total} = 640 + 32 = \$672$$

Challenge

Bob wants to get a box of nuts and bolts. If he orders from Billy's Hardware, it costs \$50 and the shipping fee is 6%. If he orders from Pops ToolShop, it costs \$55 and the shipping fee is 4%. Which store should Bob order from so the total price is cheaper?



$$\text{Billy's Hardware shipping fee } \frac{50 \times 6}{100} = 3$$

$$\text{Total cost} = 50 + 3 = \$53$$

$$\text{Pops Tool Shop shipping fee } \frac{55 \times 4}{100} = 2.2$$

$$\text{Total cost} = 55 + 2.2 = \$57.20$$

Bob should order from Billy's Hardware.

Answer Sheet



Let's Recycle

Andy collects plastic bottles, soda cans and paper bags for recycling. The recycling machine will give change back (in cents). The rates appear below.



$$p + 4 = \text{cents}$$



$$(s + 10)2 = \text{cents}$$



$$3b = \text{cents}$$

The letter p represents the number of plastic bottles he puts in.

The letter s represents the number of soda cans he puts in.

The letter b represents the number of paper bags he puts in.

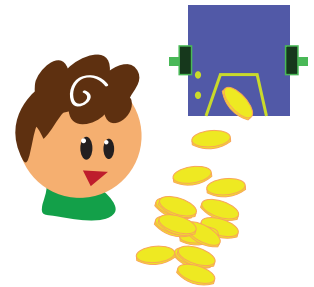
Find the total amount of change Andy will get if he puts these items in the machine.

See the example.

On Monday, Andy put 10 plastic bottles, 4 soda cans, and 5 paper bags into the machine.

- Change from the plastic bottle = $p + 4$, $p = 10$
Change from the plastic bottle = $10 + 4 = 14$ cents
- Change from the soda cans = $(s + 10)2$, $s = 4$
Change from the soda cans = $(4 + 10)2 = (14)2 = 28$ cents
- Change from the paper bags = $3b$, $b = 5$
Change from the paper bags = $3(5) = 15$ cents

Andy gets $14 + 28 + 15 = 57$ cents (\$0.57) from the recycling machine.



On Wednesday, Andy put in 8 plastic bottles, 12 soda cans, and 7 paper bags into the machine.

Change from the plastic bottle = $p + 4$, $p = 8$
 $= 8 + 4 = 12$ cents
Change from the soda cans = $(s + 10)2$, $s = 12$
 $= (12 + 10)2 = 44$ cents
Change from the paper bags = $3b$, $b = 7$
 $= 3(7) = 21$ cents
Andy gets $12 + 44 + 21 = 77$ cents from the recycling machine.

On Friday, Andy put in 25 plastic bottles, 18 soda cans, and 9 paper bags into the machine.

Change from the plastic bottle = $p + 4$, $p = 25$
 $= 25 + 4 = 29$ cents
Change from the soda cans = $(s + 10)2$, $s = 18$
 $= (18 + 10)2 = 56$ cents
Change from the paper bags = $3b$, $b = 9$
 $= 3(9) = 27$ cents
Andy gets $29 + 56 + 27 = 112$ cents (\$1.12) from the recycling machine.

How much money would Andy get in total from Wednesday and Friday?

77 cents + 112 cents = 189 cents = \$1.89 from the recycling machine.

Andy gets a total of 189 cents (\$1.89) from the recycling machine.

Answer Sheet

5th
Grade

Math

Price Per Unit

Find the price of each individual item in the packages below. Show your work.

1. A pack of toothbrushes costs \$16. There are 4 toothbrushes in the pack. How much does each toothbrush cost?



$$16 \div 4 = 4$$

Each toothbrush costs \$4.

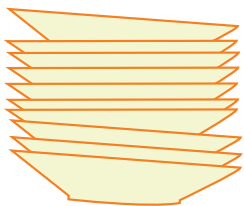
2. A dozen pairs of socks costs \$60. How much does each pair cost?



$$60 \div 12 = 5$$

Each pair costs \$5.

3. A set of dishes costs \$80. There are 10 dishes in the set. How much does each dish cost?



$$80 \div 10 = 8$$

Each dish costs \$8.

Challenge

Roxi wants a set of markers. One set of 3 markers costs \$12. Another set of 5 markers costs \$15. Which one is a better deal?



$$12 \div 3 = 4$$

Each marker costs \$4 in the set of 3 markers.

$$15 \div 5 = 3$$

Each marker costs \$3 in the set of 5 markers.

The set of 5 markers for \$15 is a better deal.

Answer Sheet



Back To School

Practice
Finding
Totals

The total price can be found by multiplying the number of items by the cost. Answer the questions below and show your work.

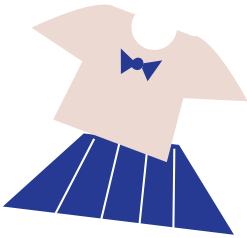
1. Meg bought 20 pairs of socks. Each pair costs \$3. How much did she pay?



$$20 \times 3 = 60$$

She paid \$60.

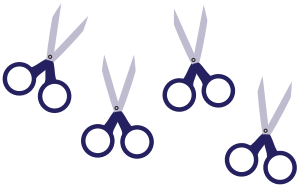
-
2. Liz bought 5 school uniforms. Each uniform cost \$100. How much did she pay?



$$100 \times 5 = 500$$

She paid \$500.

-
3. Darris bought 4 scissors and 2 glue sticks. Each scissor cost \$5 and each glue stick cost \$1. How much did he pay?



$$4 \times 5 = 20$$

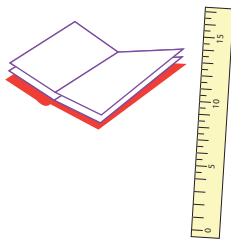
$$2 \times 1 = 2$$

$$\text{Total} = 20 + 2 = 22$$

He paid \$22.

Challenge

Emily bought 5 notebooks, 10 pencils, 5 markers, and 2 rulers. Each notebook and each ruler cost \$3. Each pencil cost \$0.20 and each marker cost \$2. How much did Emily pay?



$$\text{Notebooks } 5 \times 3 = 15$$

$$\text{Pencils } 10 \times 0.20 = 2$$

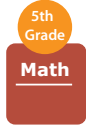
$$\text{Markers } 5 \times 2 = 10$$

$$\text{Rulers } 2 \times 3 = 6$$

$$\text{Total} = 15 + 2 + 10 + 6 = 33$$

Emily paid \$33

Answer Sheet



Commission #1

Commission is a percentage of the product sale price. If a product sale price is \$100, and the commission is 10%, a salesperson will get \$10 in commission. Find out the commission of each salesperson below.

1. Mitsy sold a diamond ring. The sale price is \$5,000. The commission is 1%. How much commission will she get?



$$\frac{5000 \times 1 = 50}{100}$$

She will get \$50 in commission.

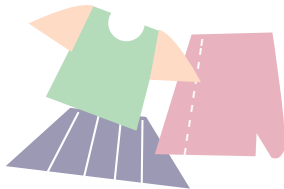
2. Jordan sold a camera. The sale price is \$200. The commission is 5%. How much commission will he get?



$$\frac{200 \times 5 = 10}{100}$$

He will get \$10 in commission.

3. Andrea sells women's clothing. Today she sold a total of \$400. The commission is 7%. How much commission will she get?



$$\frac{400 \times 7 = 28}{100}$$

She will get \$28 in commission.

Challenge

Ashley sells women's lipstick. She gets \$15 per hour. Today she worked 5 hours and sold \$50 in lipstick. The commission is 3%. How much money did she make today?



$$\begin{aligned} \text{Ashley's total wages} &= 15 \times 5 = 75 \\ \text{Commission in sale} &= \frac{50 \times 3 = 1.50}{100} \end{aligned}$$

Total earning of Ashley today = $75 + 1.50 = \$76.50$

Answer Sheet



Commission

Commission is a percentage of the product sale price. If a product sale price is \$100, and the commission is 10%, a salesperson will get \$10 in commission. Find out the commission of each salesperson below.

1. Today Troy sold a \$500 flat screen television and a \$600 refrigerator. The commission for selling a television is 2% and 3% for selling a refrigerator. How much commission did Troy earn today?



$$\text{Television } \frac{500 \times 2}{100} = \$10 \quad \text{Refrigerator } \frac{600 \times 3}{100} = \$18$$

$$\text{Total Commission earned today} = 10 + 18 = \$28$$

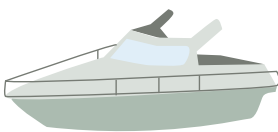
2. Peter sold two cars today. The red car costs \$10,000 and he will get 1% commission. The blue car costs \$12,000 and he will get 2% commission. How much commission will Peter get from selling these two cars?



$$\text{Red car } \frac{10,000 \times 1}{100} = \$100 \quad \text{Blue car } \frac{12,000 \times 2}{100} = \$240$$

$$\text{Total Commission earned today} = 100 + 240 = \$340$$

3. Donna sold a boat. The price is \$50,000. Her commission is 0.1%. How much commission will she get?

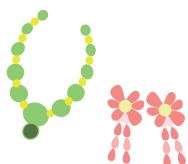


$$\text{Boat } \frac{50,000 \times 0.1}{100} = \$50$$

$$\text{Total Commission earned today} = \$50$$

Challenge

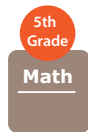
- Rosie sold an emerald necklace that cost \$7,500 and she will get 1% commission. She sold ruby earrings that cost \$2,000 and she will get 4% commission. Which piece of jewelry gives her more commission?



$$\text{Emerald necklace } \frac{7500 \times 1}{100} = \$75 \quad \text{ruby earring } \frac{2000 \times 4}{100} = \$80$$

Selling the ruby earrings gives her more commission.

Answer Sheet



Sales Tax

Sales tax is different in each state. Find the sales tax each person will pay. Show your work.

1. Ruby bought some clothes that cost \$50. Sales tax in her state is 10%. How much is the sales tax.



$$\text{Sales Tax } \frac{50 \times 10 = \$5}{100}$$

$$\text{Sales Tax} = \$5$$

2. April bought a handbag that costs \$20. Sales tax in her state is 7%. How much is the sales tax?



$$\text{Sales Tax } \frac{20 \times 7 = \$1.40}{100}$$

$$\text{Sales Tax} = \$1.40$$

3. Ryan bought a surfboard that costs \$200. Sales tax is 12%. How much is the sales tax?

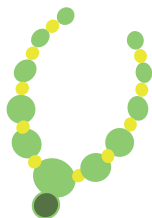


$$\text{Sales Tax } \frac{200 \times 12 = \$24}{100}$$

$$\text{Sales Tax} = \$24$$

Challenge

- Neil bought a necklace that costs \$100. Sales tax is 7.5%. How much will he pay *total*?



$$\text{Sales Tax } \frac{100 \times 7.5 = \$7.50}{100}$$

$$\text{Total paid} = \$100 + \$7.50 = 107.50$$

Answer Sheet

5th
Grade

Show Me the Money!



6 Digits Subtraction with Decimals

Subtract the dollar amounts. Then answer the question below.

$$\begin{array}{r} \$8,743.22 \\ - \$6,417.58 \\ \hline \$2,325.64 \end{array}$$

$$\begin{array}{r} \$6,579.68 \\ - \$1,325.25 \\ \hline \$5,254.43 \end{array}$$



$$\begin{array}{r} \$7,632.19 \\ - \$7,321.71 \\ \hline \$310.48 \end{array}$$

$$\begin{array}{r} \$3,221.37 \\ - \$1,005.61 \\ \hline \$2,215.76 \end{array}$$



$$\begin{array}{r} \$5,507.34 \\ - \$3,234.87 \\ \hline \$2,272.47 \end{array}$$

$$\begin{array}{r} \$9,545.47 \\ - \$4,189.92 \\ \hline \$5,355.55 \end{array}$$

Kenny earned \$9,433.05 last November. He spent \$5,207.15 on Christmas presents.
How much does he have left?

\$4,225.90

