

Presidential Puzzler

2nd
GRADE

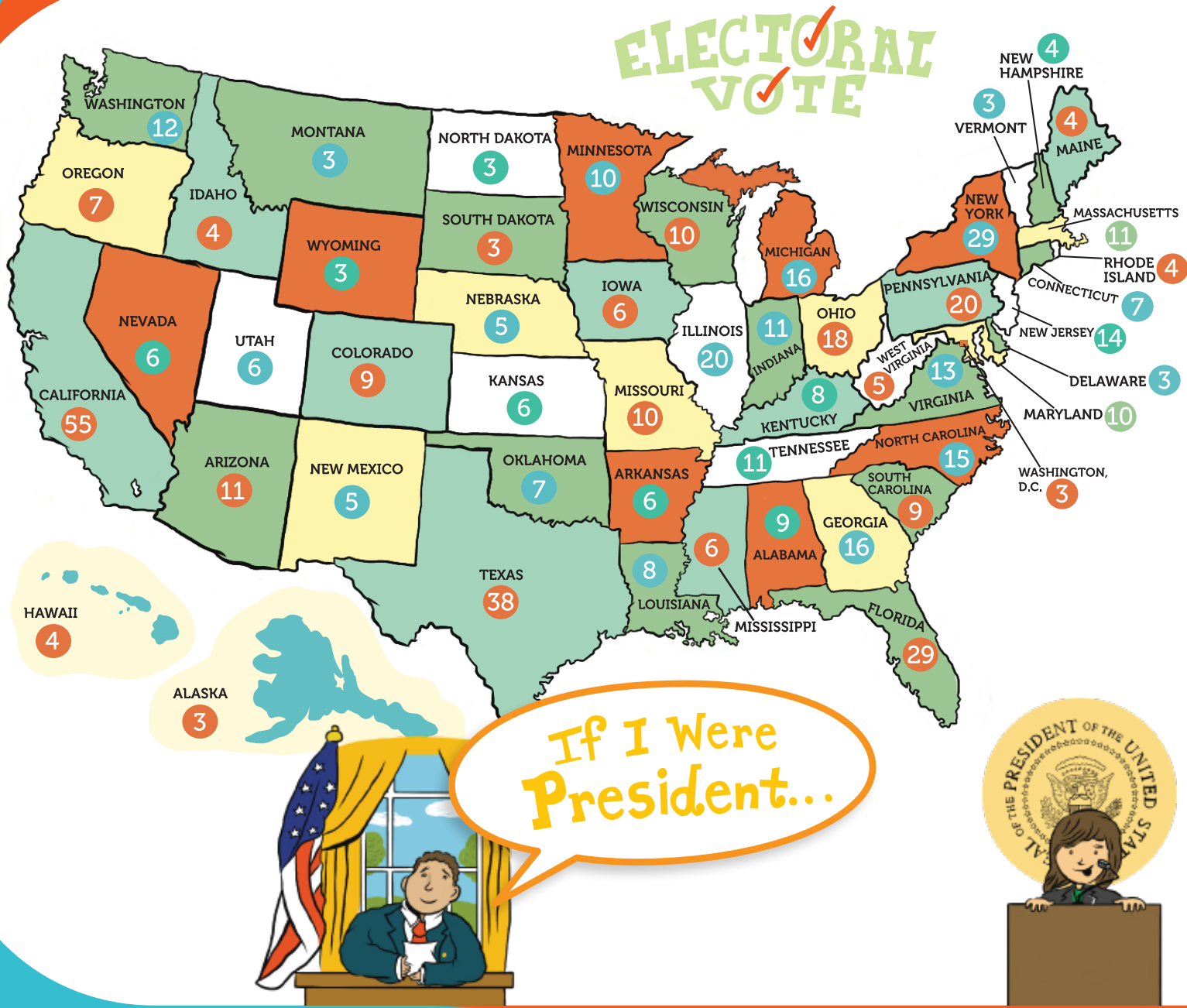


Table of Contents

Presidential Puzzler

Washington, D.C. Symbols
 Presidential Seal
 The United States Flag
The 3 Branches of Government
 The White House
 Presidential Maze
Washington, D.C. Dot-to-Dot #1
Washington, D.C. Dot-to-Dot #2
 Presidential Name Scramble
 Electoral Vote
Presidential Paper Dolls: Girl
Presidential Paper Dolls: Boy
 If I Were President...
 Presidential Quiz

Certificate of Completion

WASHINGTON DC

□ Symbols △



Washington, D.C. is our nation's capitol, and it's full of interesting things to see! Join the Mack family as they tour this great city.

Bonus Activity: Use your creativity to color in the illustrations!

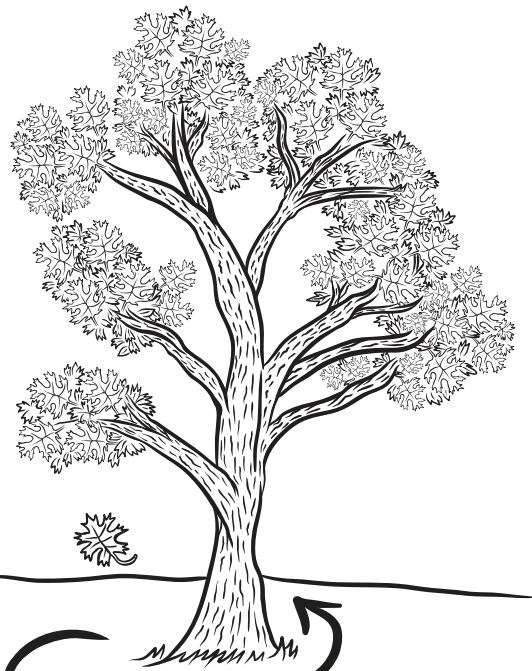
WASHINGTON MONUMENT

This monument was completed in 1884, and it is a tribute to the first U.S. president, George Washington. It is 555 feet tall.



SCARLETT OAK:

This is the official tree of Washington, D.C.

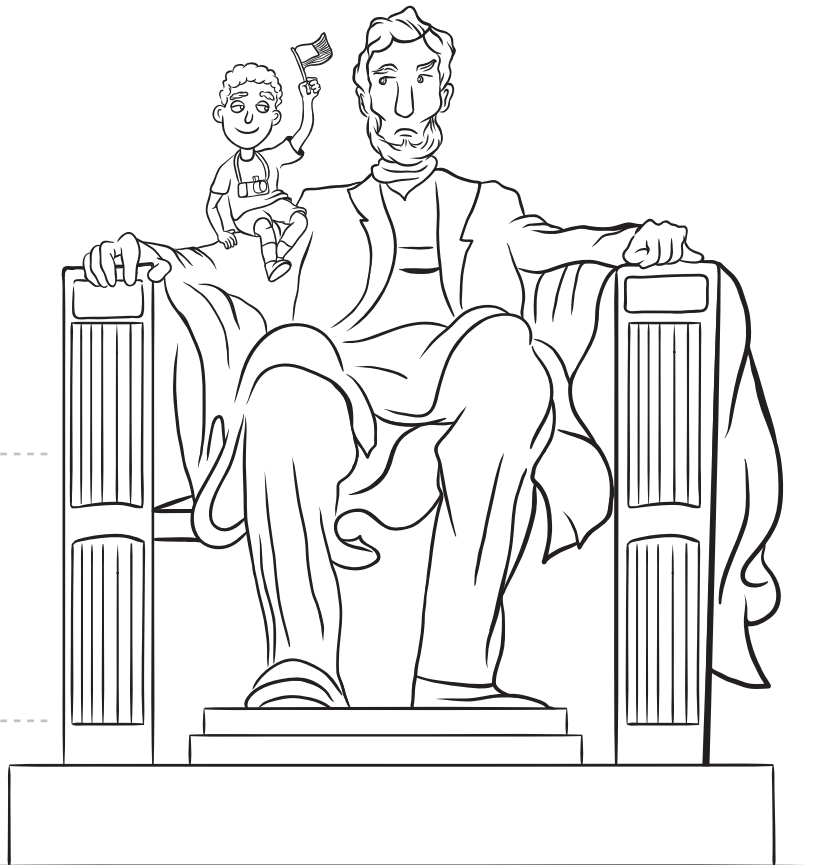


The scarlett oak leaf turns vibrant red during the autumn season!





WOOD THRUSH:
This is the official bird of
Washington, D.C.



LINCOLN MEMORIAL:
This statue of the 16th
president, Abraham Lincoln,
was unveiled in 1922 and
stands 30 feet high.



AMERICAN BEAUTY ROSE:
This is the official flower of
Washington, D.C.

Presidential

SEAL

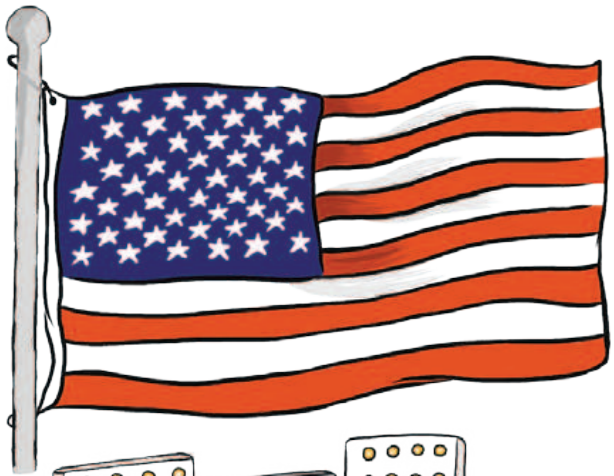
The Seal of the President of the United States is a symbol for the presidency. It is used on presidential vehicles, podiums, and documents from the president to Congress.

The eagle stands for liberty. The arrows represent strength in unity. The olive branch is a symbol of peace. There are 13 stripes and 13 stars, which stand for the thirteen colonies. The motto, "E pluribus unum," is Latin for "Many uniting into one."



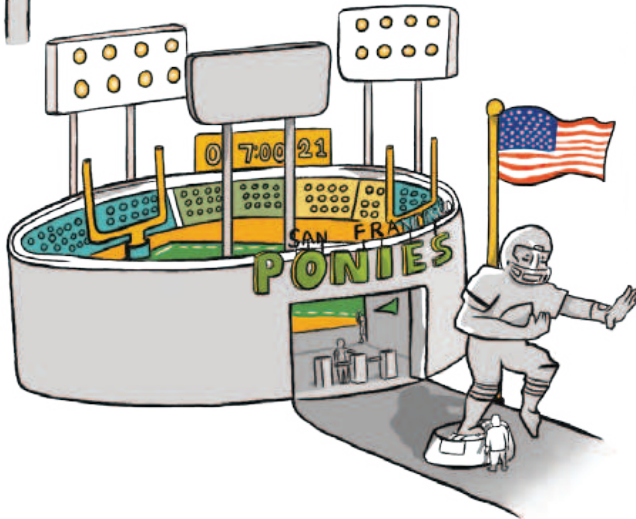
example

- 1 - Light Yellow
- 4 - Red
- 7 - Brown
- 2 - Gold or Yellow
- 5 - Bright Blue
- 6 - Green
- 3 - Dark Blue

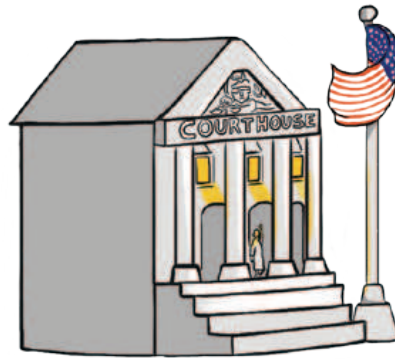


THE *United States* FLAG

The United States has 13 stripes for the 13 colonies, which became the first 13 states. It has 50 stars for the 50 states.



Sporting stadiums and arenas have American flags. Before games, the national anthem is played.



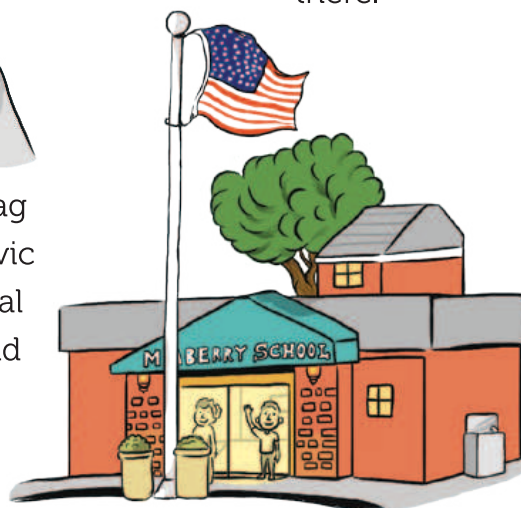
The American flag is displayed outside many public buildings, such as libraries, courthouses, police stations, and city halls.



Neil Armstrong was the first man to set foot on the moon in 1969, and he raised an American flag there.



Many people display the American flag outside their homes, especially on civic holidays, such as 4th of July, Memorial Day, Veterans Day, Presidents Day, and Labor Day.



Many schools display the American flag.



Executive Branch:

The president leads the executive branch, carrying out laws, vetoing laws, directing national defense, and directing government. This branch works in the White House.

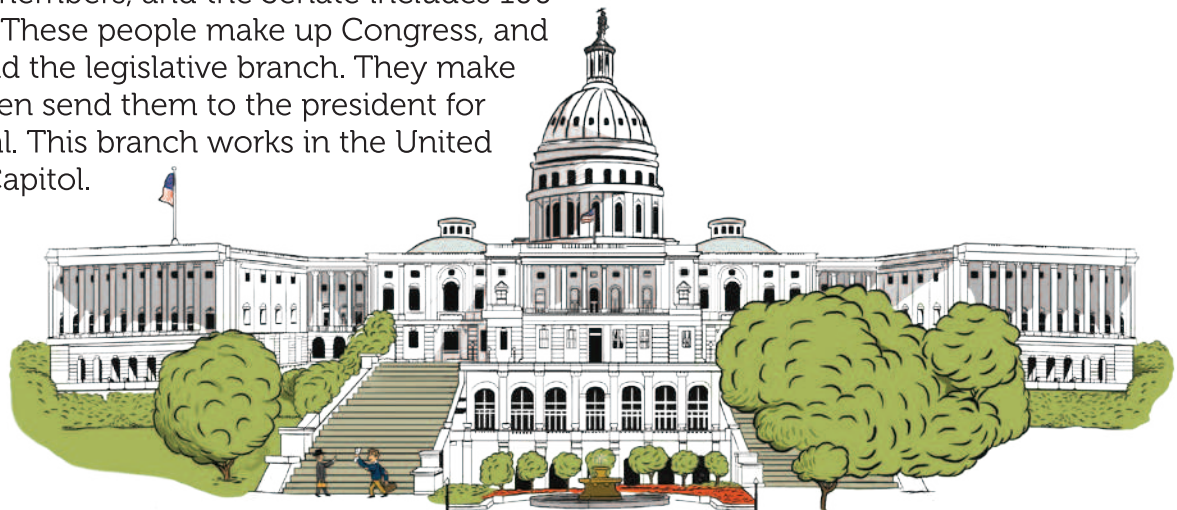


Judicial Branch:

The Supreme Court, made of nine judges, leads the Judicial Branch. This branch reviews laws and decides cases that involve states' rights. This branch works in the Supreme Court Building.

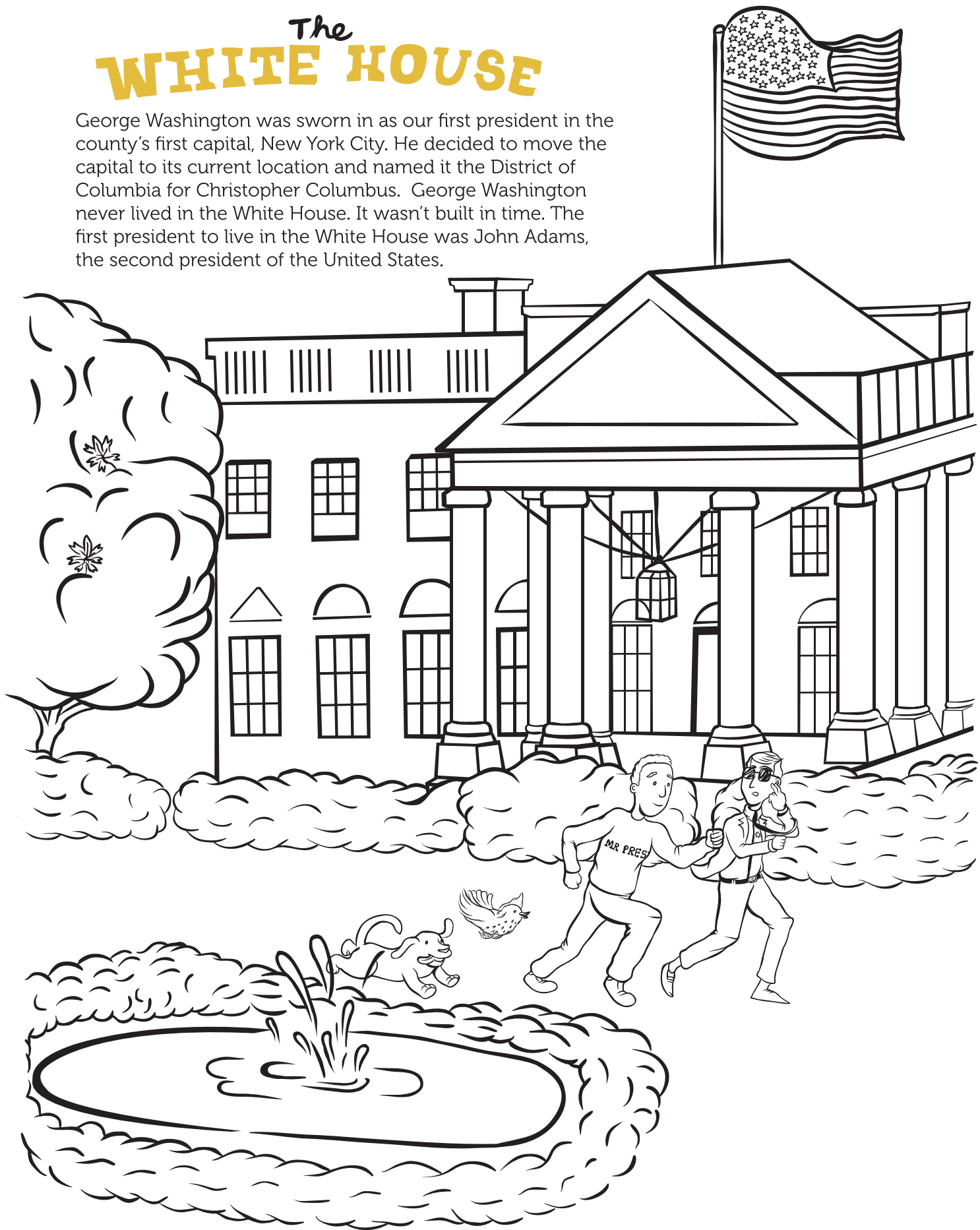
Legislative Branch:

The House of Representatives includes 435 voting members, and the Senate includes 100 people. These people make up Congress, and they lead the legislative branch. They make laws, then send them to the president for approval. This branch works in the United States Capitol.



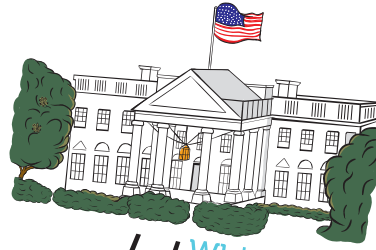
The WHITE HOUSE

George Washington was sworn in as our first president in the country's first capital, New York City. He decided to move the capital to its current location and named it the District of Columbia for Christopher Columbus. George Washington never lived in the White House. It wasn't built in time. The first president to live in the White House was John Adams, the second president of the United States.

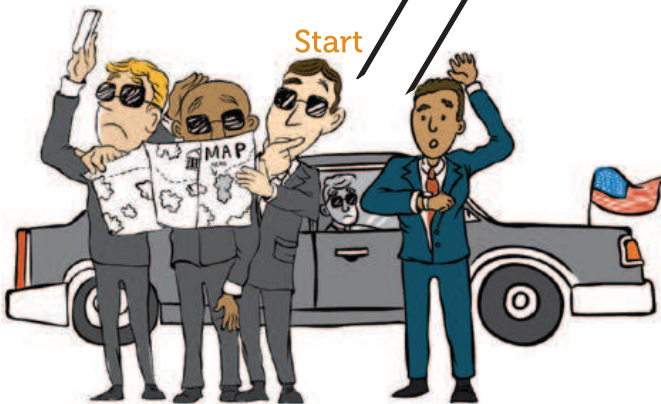
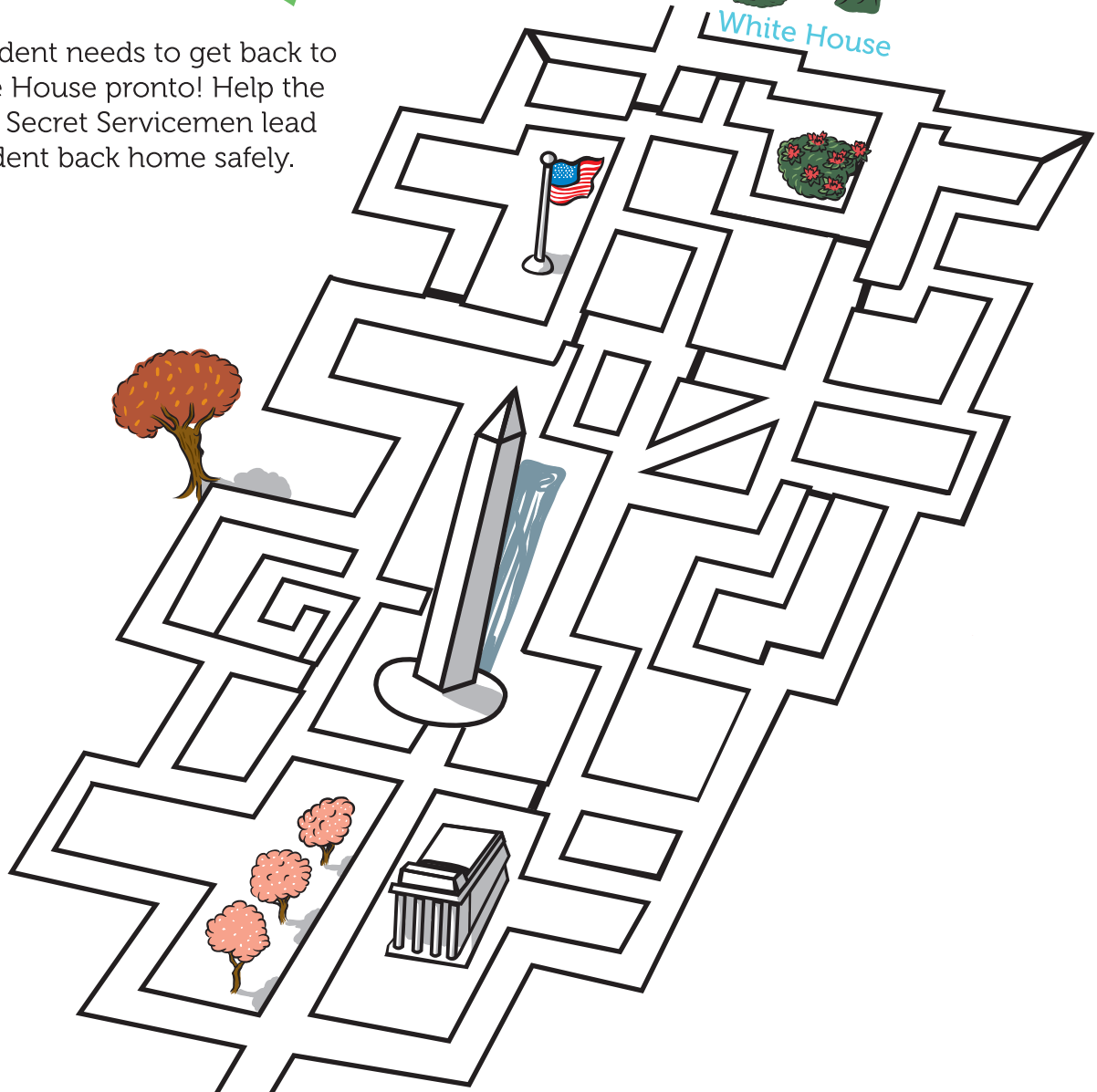


PRESIDENTIAL MAZE

The president needs to get back to the White House pronto! Help the confused Secret Servicemen lead the president back home safely.

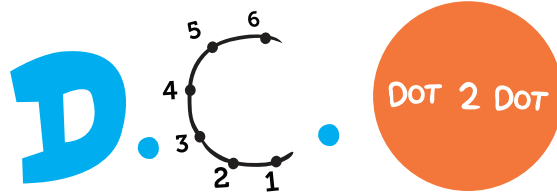


White House

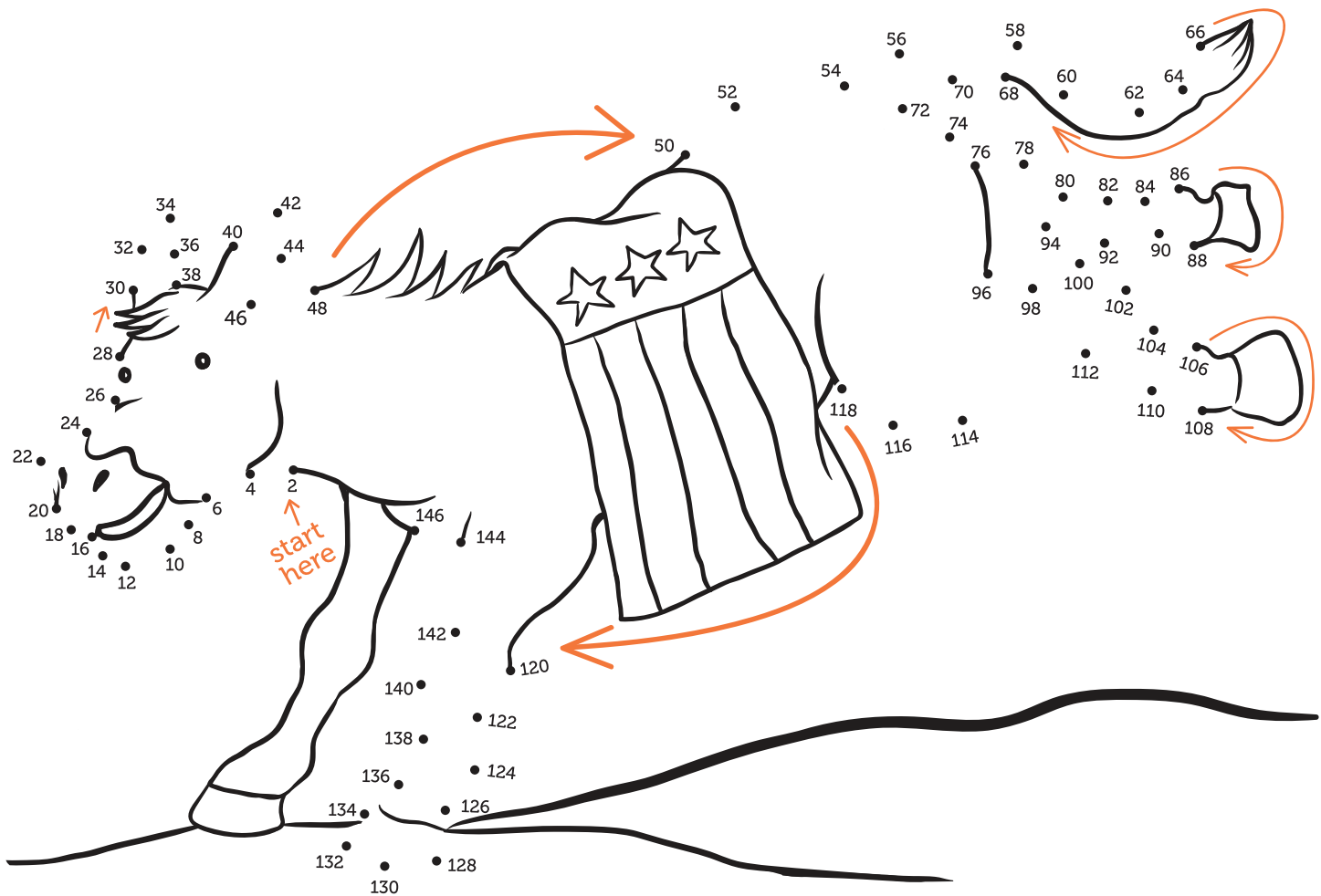


Start

WASHINGTON



Skip count by two to connect the dots.

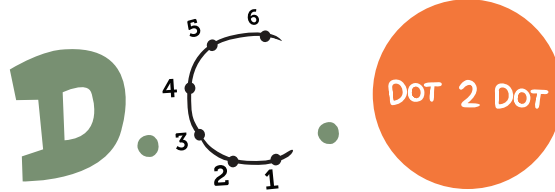


This animal is the unofficial symbol of the Democratic Party of the United States.

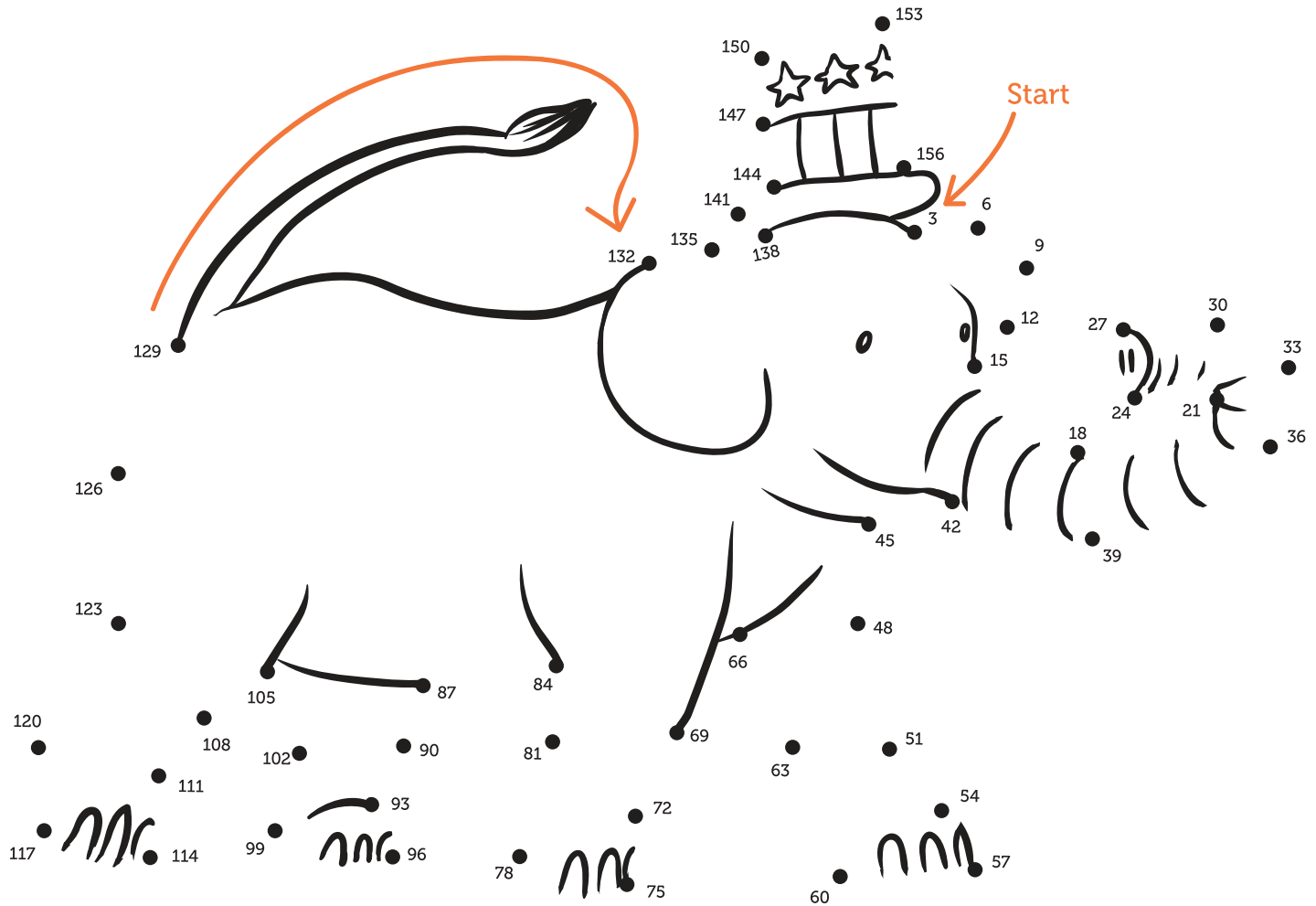
What is this animal?

Bonus Activity: Color in the drawing after connecting the dots.

WASHINGTON



Skip count by three to connect the dots.

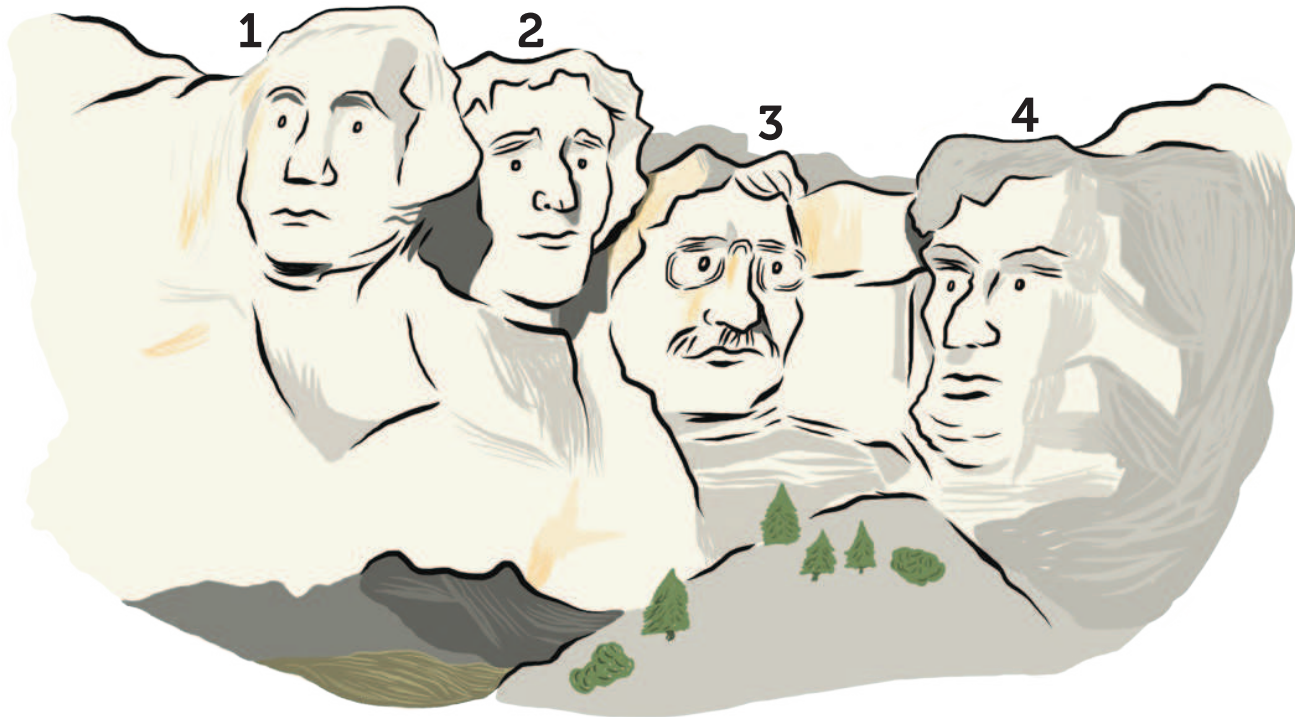


This animal is the official symbol of the Republican Party of the United States.

What is this animal?

Bonus Activity: Color in the drawing after connecting the dots.

Presidential
NAME SCRAMBLE



Unscramble the letters to name the four presidents on Mount Rushmore.

1. THINWAGONS _____ _____ _____

2. FEJOFERNS _____ _____

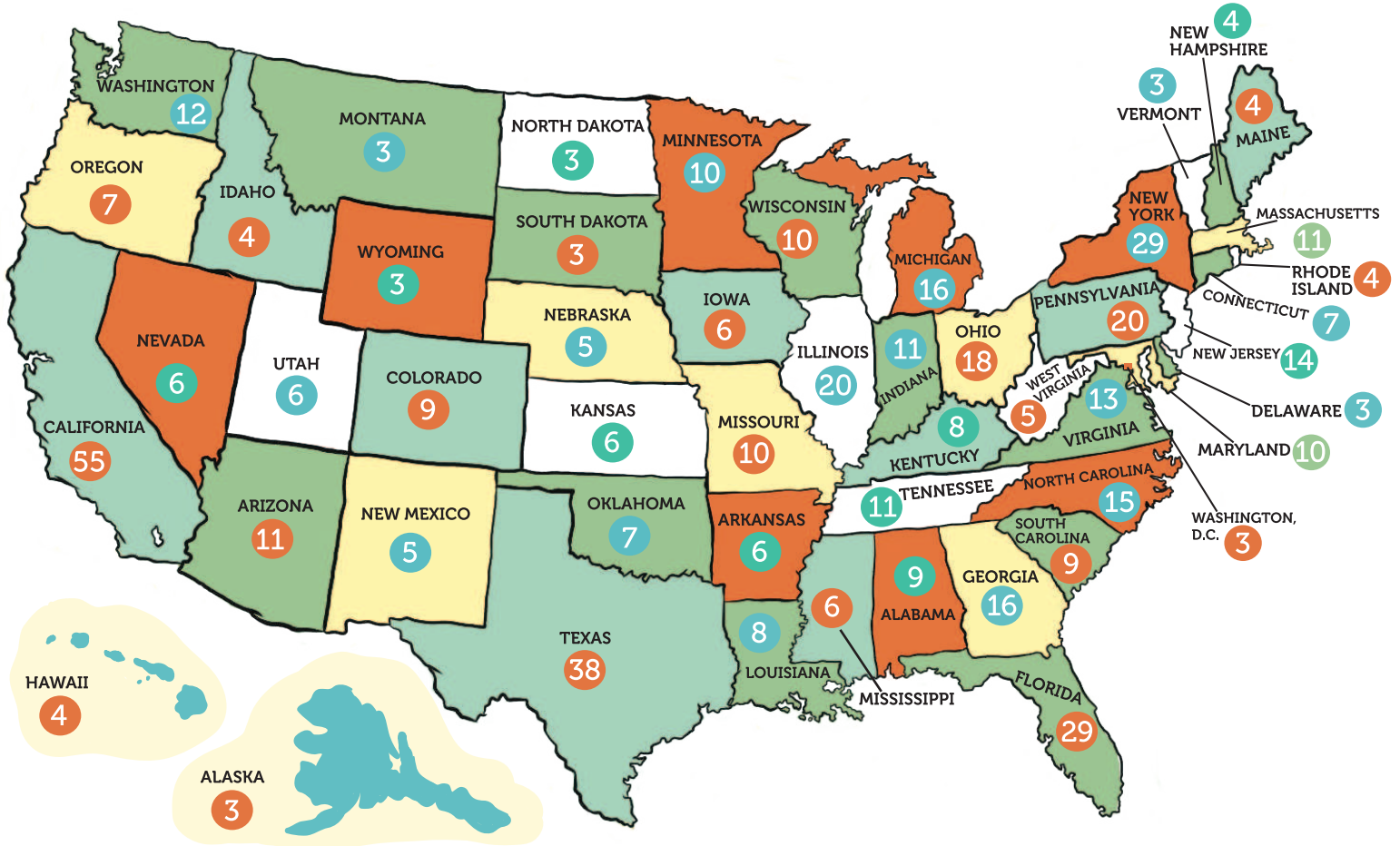
3. STOVEROLE _____ _____

4. CLONNIL _____ _____ _____

Unscramble the letters in the boxes to name another place where the faces of presidents can be found.

ELECTORAL VOTE

The presidential election is determined by electoral votes. Each state's population determines its number of electoral votes. When a candidate wins the vote in a state, he wins all of the electoral votes for that state. The candidate with the most electoral votes wins.



Using the map, solve the equations:

Example: North Carolina + Missouri: $15 + 10 = 25$

Virginia + Ohio

Minnesota + Utah

Florida + Georgia + Alabama

Maine + Hawaii + New Mexico

Washington + Michigan + Maryland

Pennsylvania + New Hampshire + Iowa

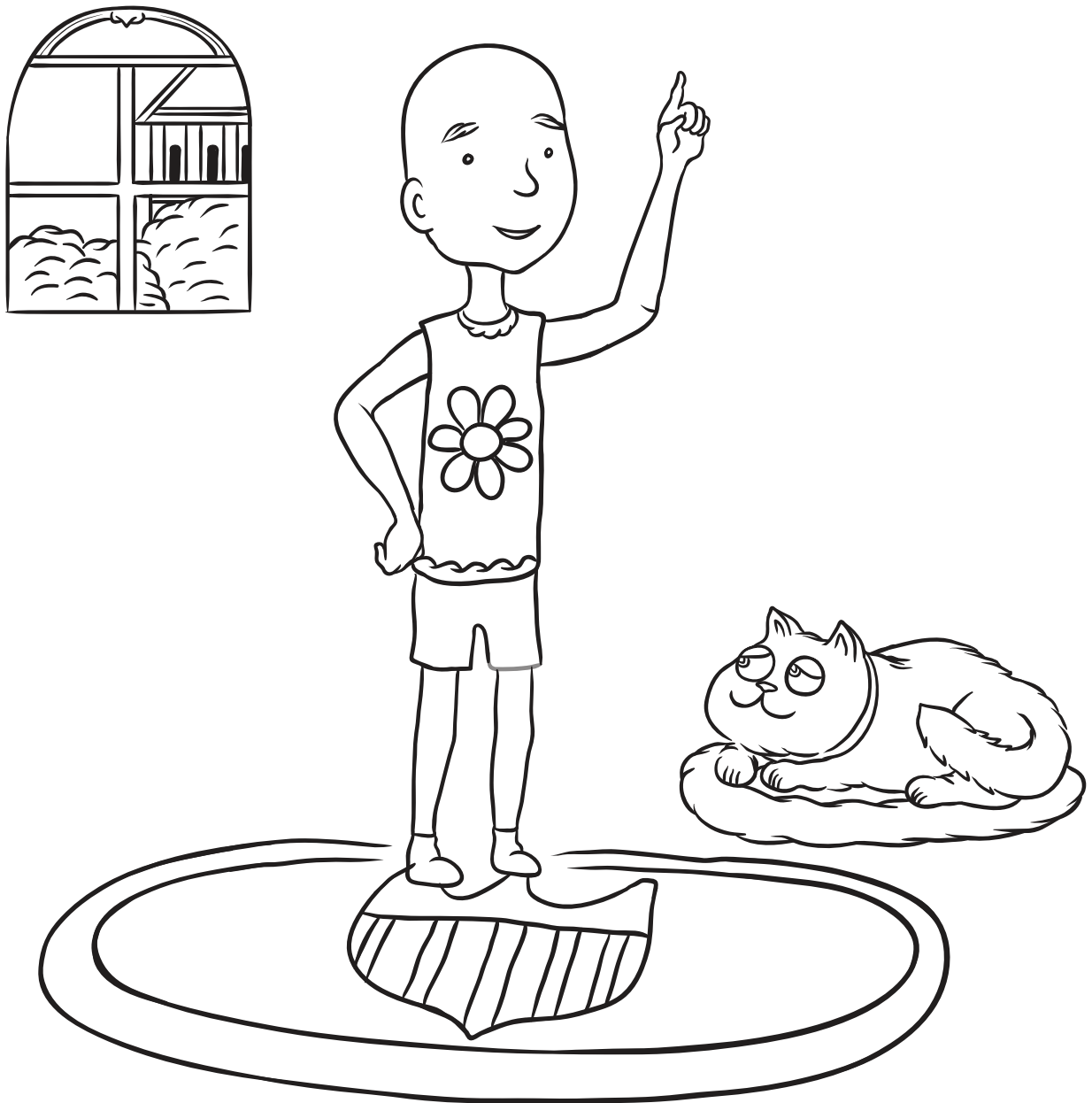
Presidential

PAPER • DOLLS

What would you look like if you were the president?

We've all dreamed of being president at one time or another. Now, here is your chance to see what you would look like as the leader of the free world.

Color in the illustration below, then color, cut out and paste on the features and accessories that best represent you as president!



HAIRSTYLES



ACCESSORIES



necklaces



glasses

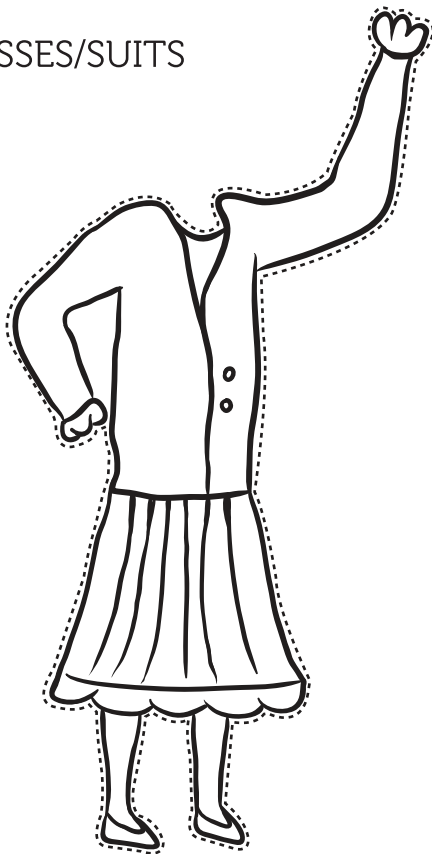


earrings

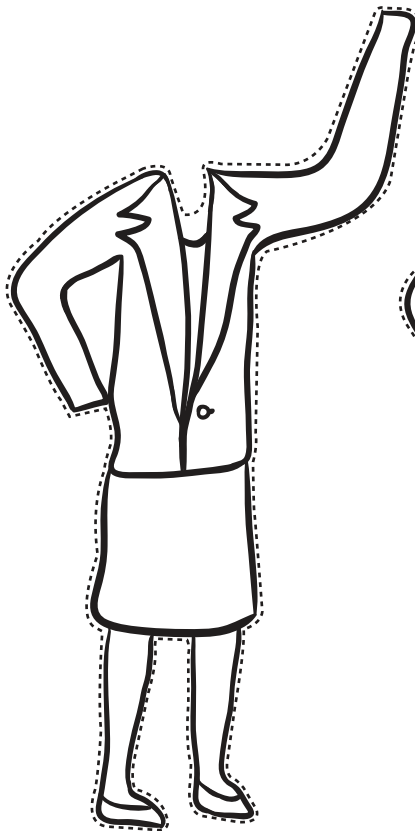


fancy hat

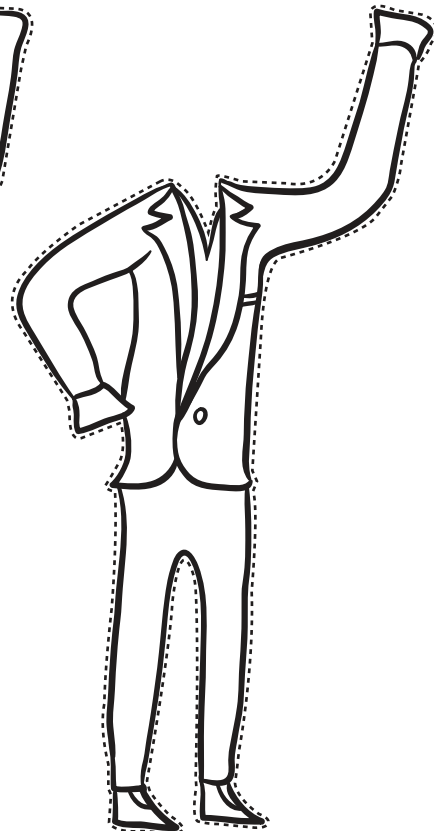
DRESSES/SUITS



casual



business



suit



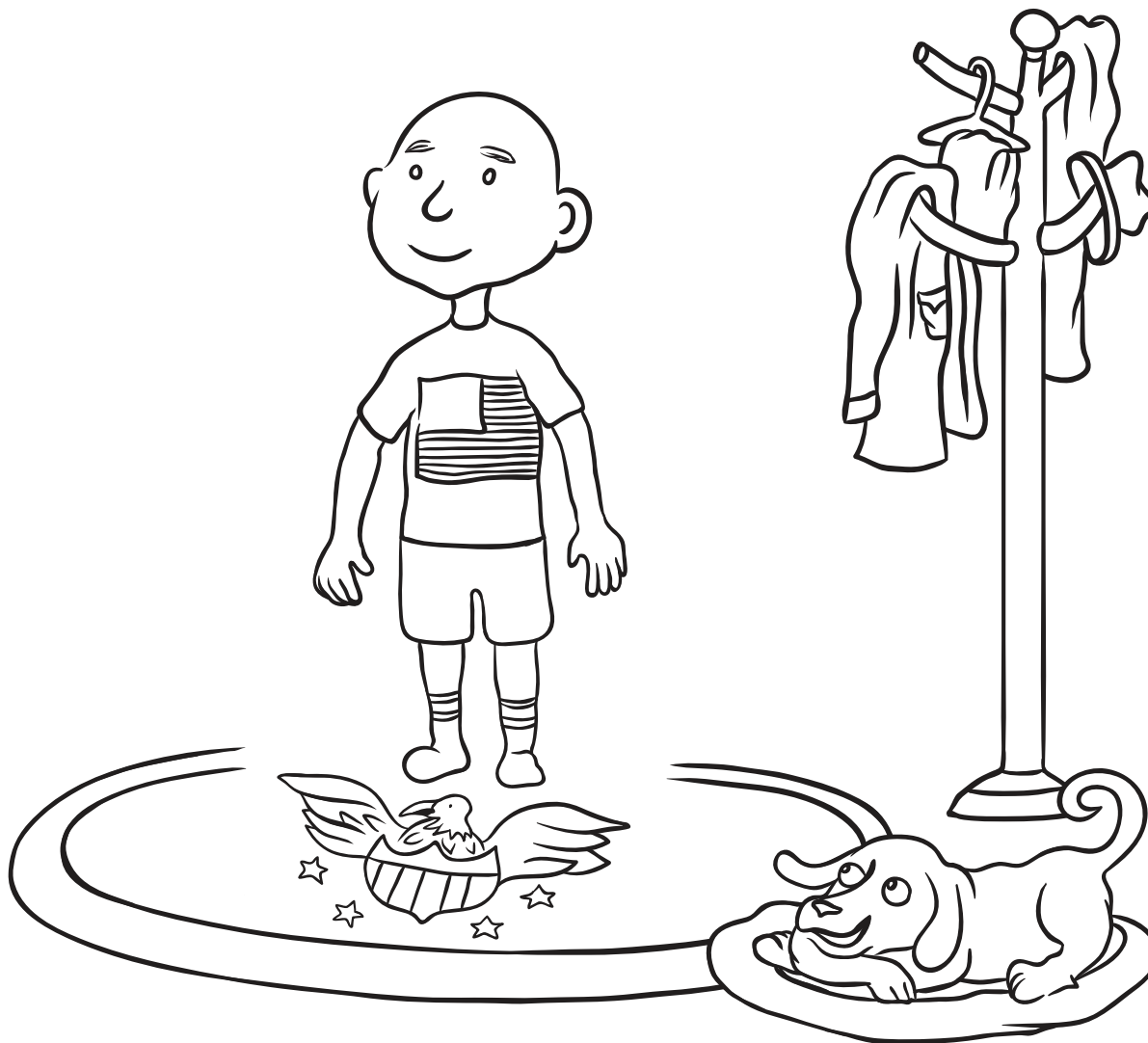
Presidential

PAPER • DOLLS

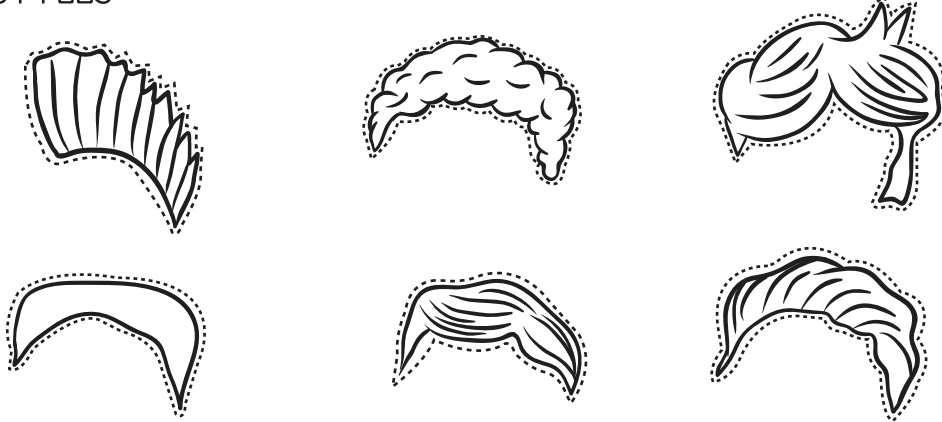
What would you look like if you were the president?

We've all dreamed of being president at one time or another. Now, here is your chance to see what you would look like as the leader of the free world.

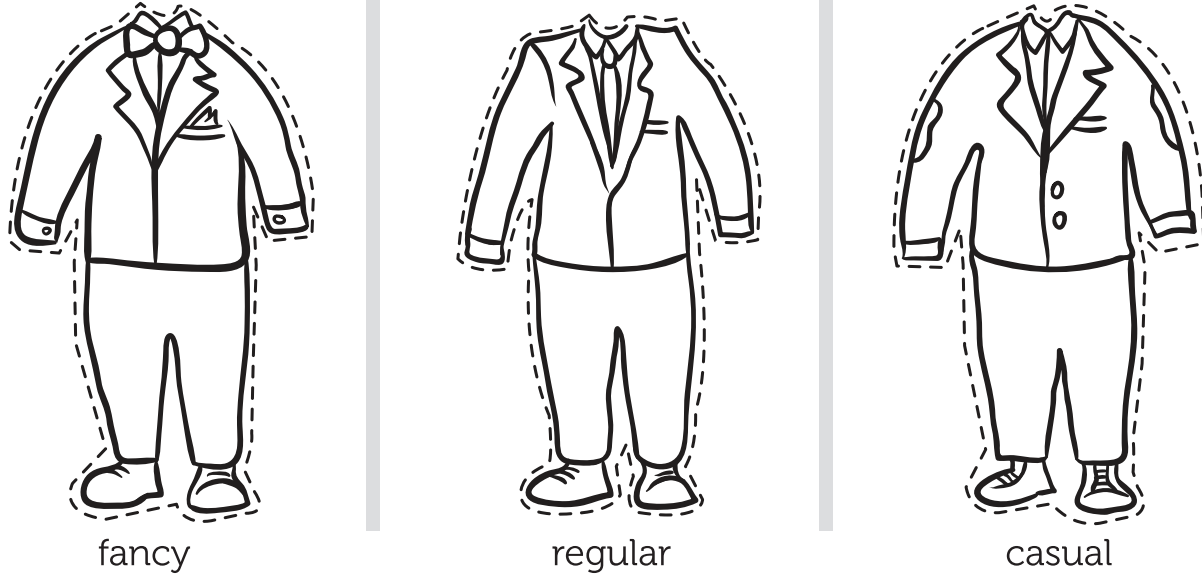
Color in the illustration below, then color, cut out and paste on the features and accessories that best represent you as president!



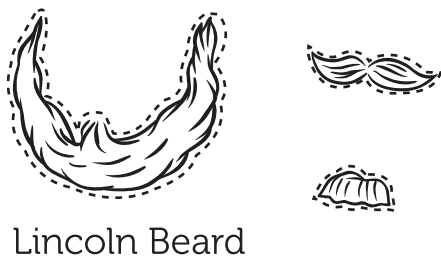
HAIRSTYLES



SUITS

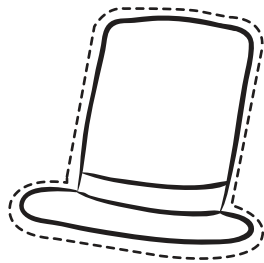


FACIAL HAIR



Lincoln Beard

ACCESSORIES



Lincoln Hat

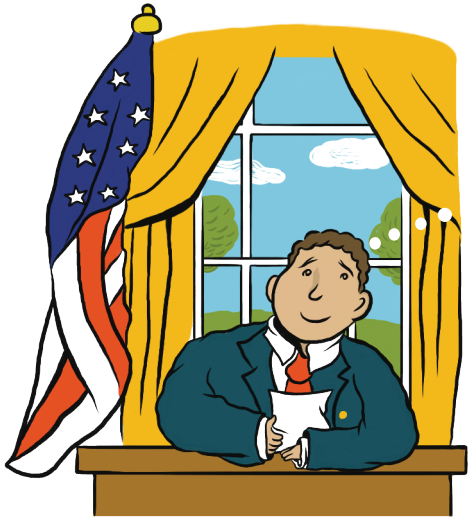


Watches



Glasses





If I Were President...

What would you do if you became president of the United States? Write it down.

.....

.....

.....

.....

.....

.....

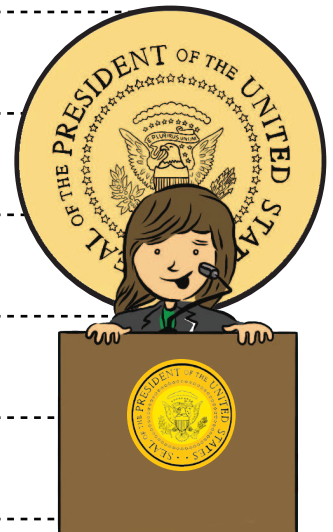
.....

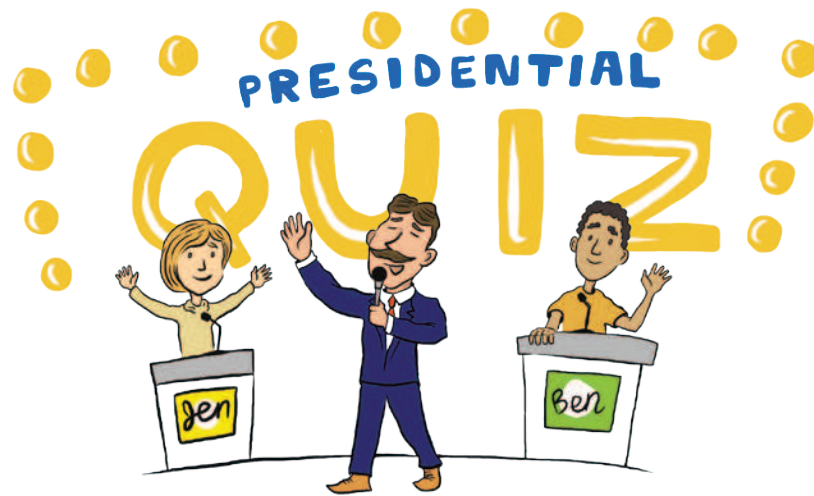
.....

.....

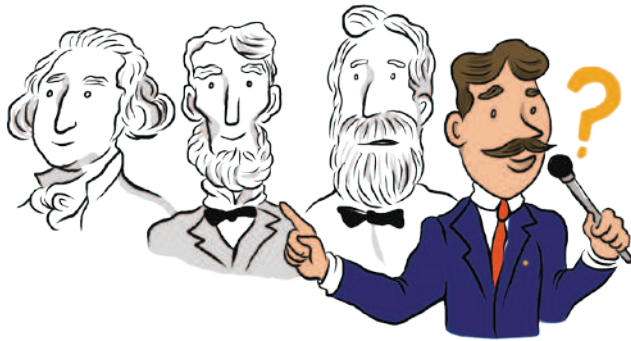
.....

.....





What have you learned in this presidential workbook?
Take this quiz to find out how much you know!



1 Who was the first U.S. president?

.....

2 Who is the current president?

.....

3 The White House is in what city?

.....



4 Why does the U.S. flag have 13 stripes and 50 stars?

.....
.....

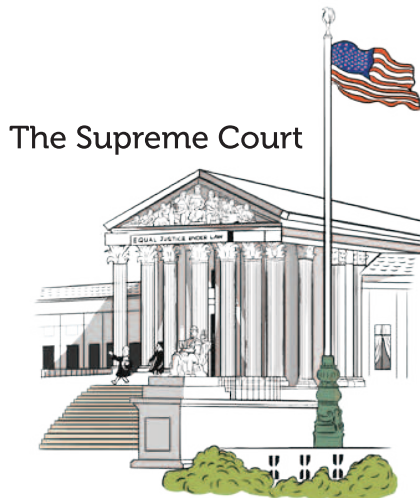
5 The election is determined by what type of votes?



6 Match each government building with the branch of government that works in it.



• Legislative Branch



• Executive Branch

• Judicial Branch





Great job!

is an ThuVienTiengAnh.Com reading superstar

