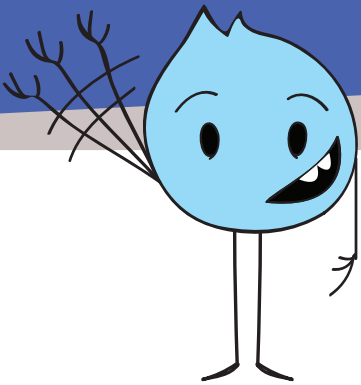
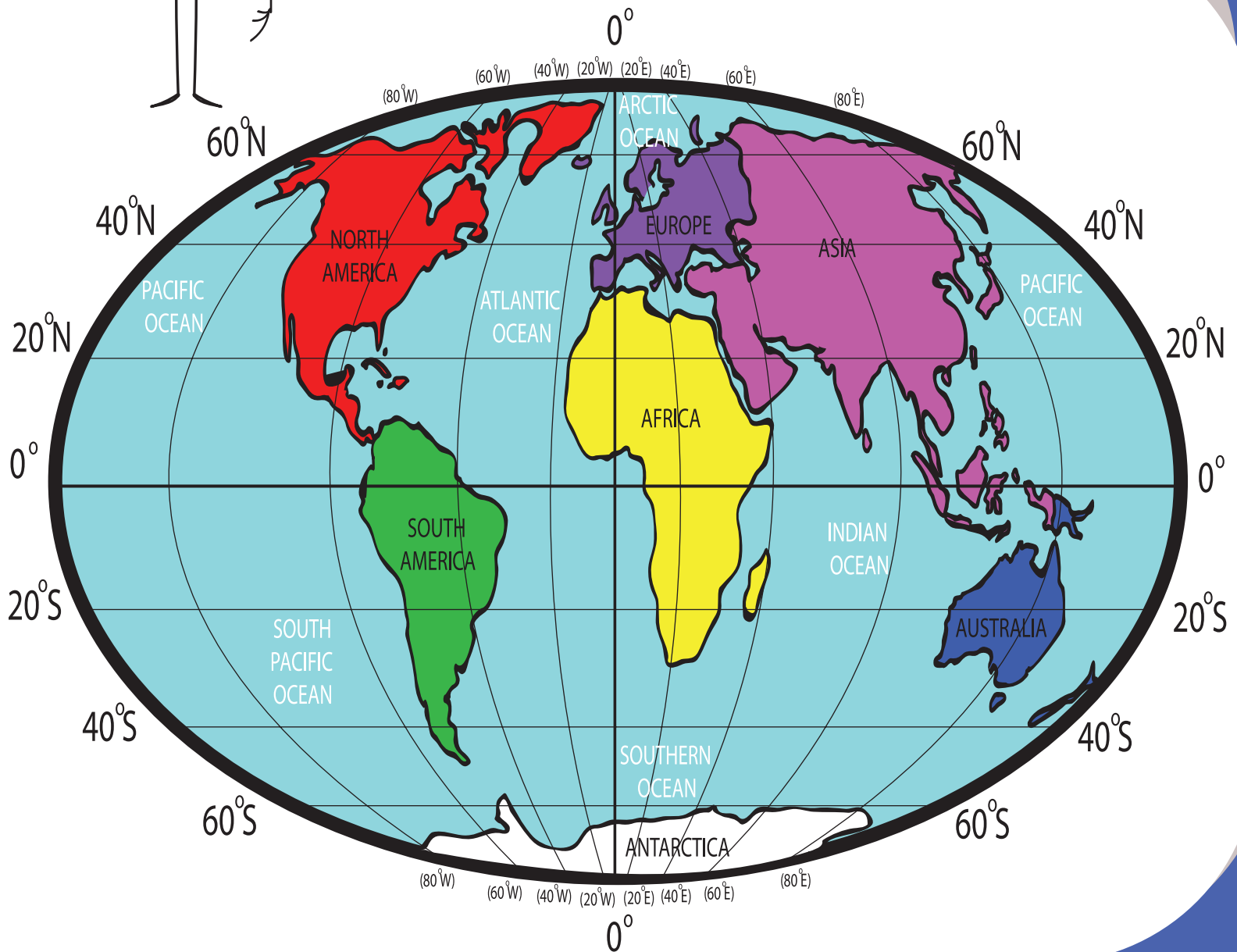


# Global Traveler

4<sup>th</sup>  
Grade



Hi!  
I'm Eddie  
the Explorer.  
Let's go around the  
world!



# Table of Contents

---

## **Global Traveler**

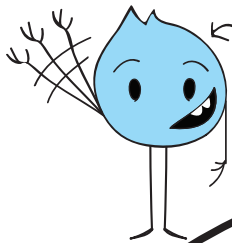
- The 7 Continents
- Different Landforms
- Important Lines on the Globe
- The Northern and Southern Hemispheres
- Road Trip
- Topographic or Contour Maps
- Climate Maps
- Where Am I? Map Coordinates
- How to Read a Map Using A Grid and Index
- What is Latitude and Longitude, and How Do You Use It?
- Map Scale
- Maps in History
- Economic or Resource Maps
- Map Your Own Road Trip Throughout Europe
- Create Your Own Map
  
- Certificate of Completion*

# IDENTIFYING THE CONTINENTS AND LARGE BODIES OF WATER ON OUR GLOBE

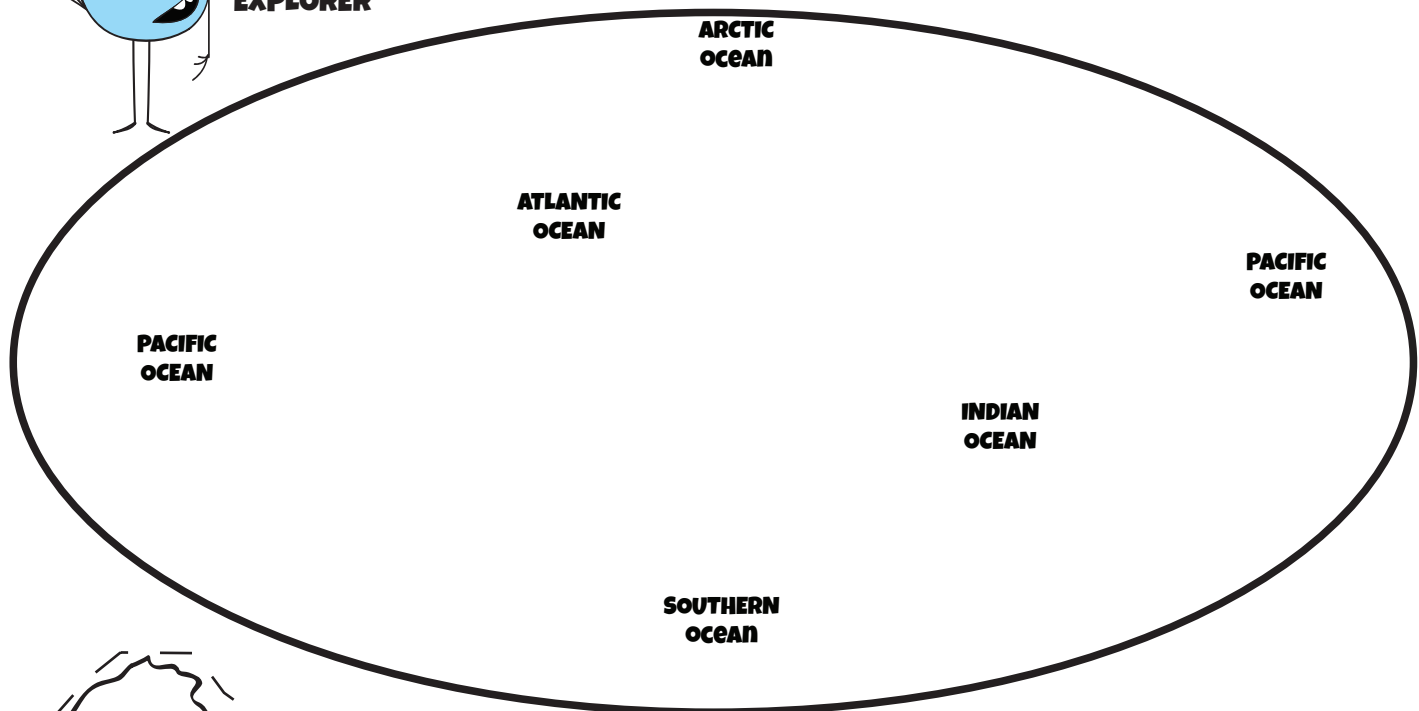
Welcome, Explorer!

First thing's first: get acquainted with the globe. There are seven continents on the planet, and many bodies of water. You'll need to know where all of them are located.

**DIRECTIONS:** Color in the continents below. Label each continent. Cut them out and glue them in the correct place on the blank globe below.



**EDDIE  
THE  
EXPLORER**



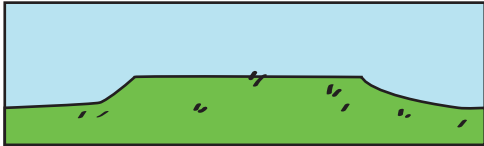
# DIFFERENT LANDFORMS

When you are traveling, it's important to know the definitions of each type of land so you know how to travel across it.

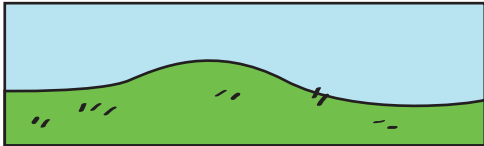
## DIRECTIONS:

Draw a line and match the landform picture with the correct definition.

1. Plateau



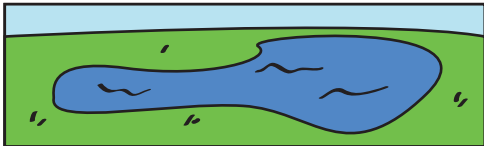
2. Hill



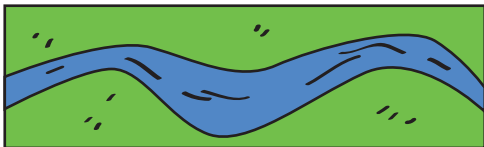
3. Mountain



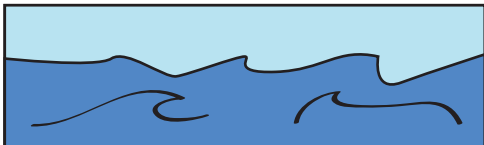
4. Lake



5. River



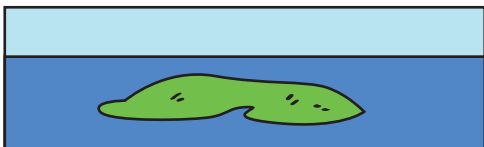
6. Ocean



7. Plain



8. Island



a. A small piece of land with water all around it

b. An area of land that is higher than the land around it, but flat

c. A tall piece of land, usually with steep sides

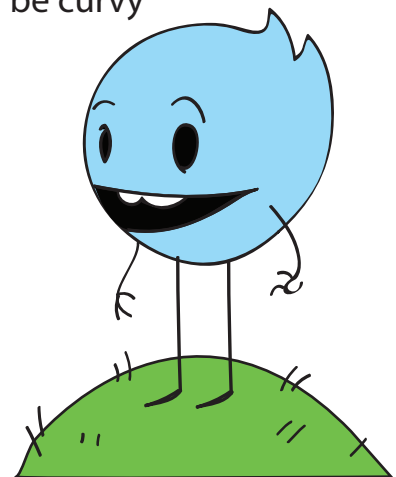
d. A line of water; can be curvy

e. Flat, open land

f. A small mound

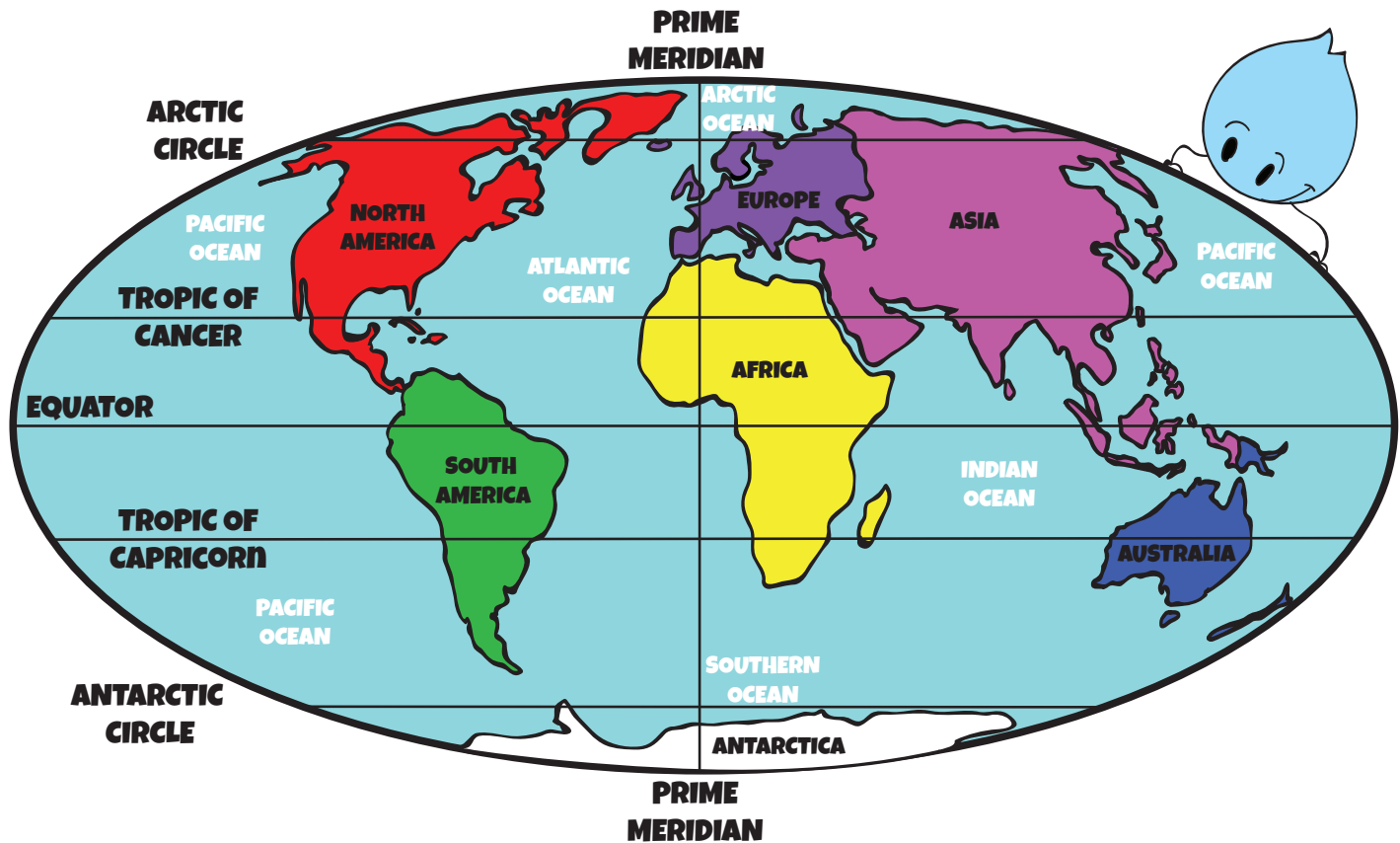
g. A small body of water, with land all around it

h. A very large body of water



Answers: 1. b, 2. f, 3. c, 4. g, 5. d, 6. h, 7. e, 8. a

# IMPORTANT LINES ON THE GLOBE



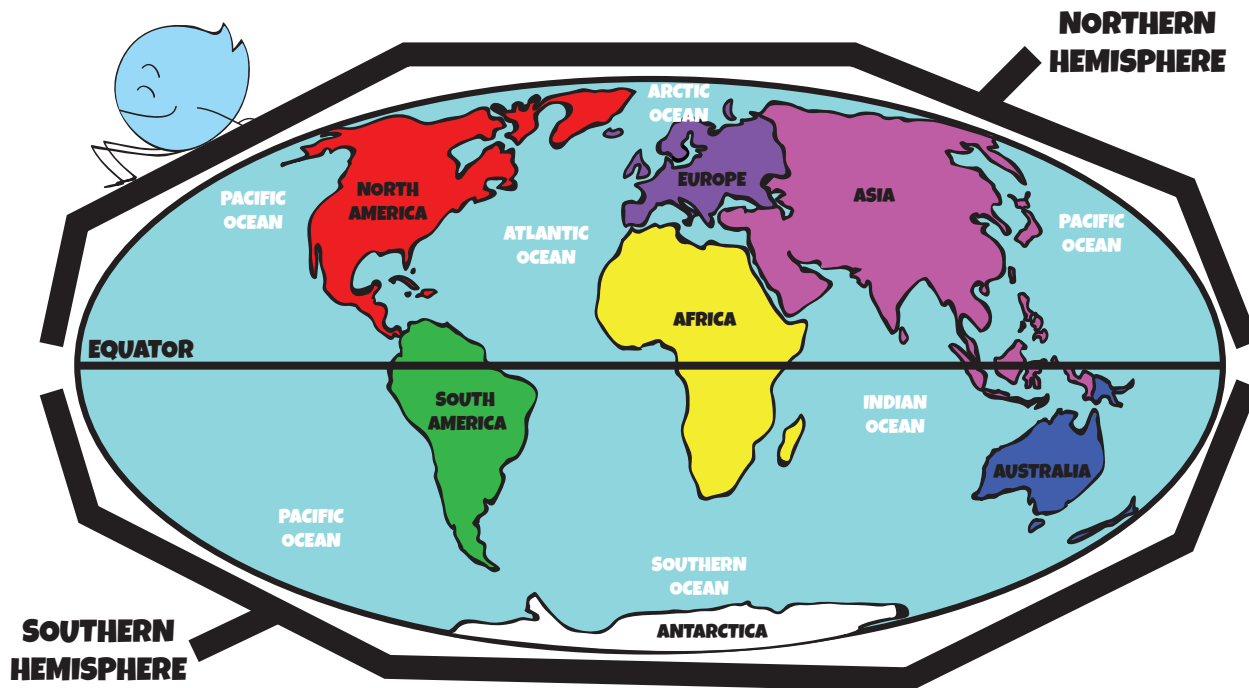
**DIRECTIONS:** Study the map above. Use it to answer the questions below.

**EXAMPLE:** What continents does the Tropic of Cancer run through? (North America, Africa and Asia)

1. What continents does the Arctic Circle run through?  
\_\_\_\_\_ , \_\_\_\_\_ and \_\_\_\_\_
2. What continents does the Equator run through?  
\_\_\_\_\_ , \_\_\_\_\_ and \_\_\_\_\_
3. What major oceans does the Prime Meridian run through?  
\_\_\_\_\_ , \_\_\_\_\_ and \_\_\_\_\_
4. What continents does the Tropic of Capricorn run through?  
\_\_\_\_\_ , \_\_\_\_\_ and \_\_\_\_\_
5. What major oceans does the Tropic of Cancer run through?  
\_\_\_\_\_ , \_\_\_\_\_ and \_\_\_\_\_

**Answers:** 1. North America, Europe, Asia 2. South America, Africa, Asia 3. Arctic, Atlantic and Indian 4. South America, Africa, Australia 5. Atlantic, Pacific and Indian

# THE NORTHERN AND SOUTHERN HEMISPHERES



Halfway between the North Pole and the South Pole, there is an invisible line called the equator. The equator divides the globe into the Northern and Southern Hemispheres.

## **FUN FACTS:**

The Northern Hemisphere has almost 90% of the land, and the southern hemisphere has almost 90% of the water. Therefore, most of the world's population lives in the Northern Hemisphere.

When it is summer in the Northern Hemisphere, it is winter in the Southern Hemisphere.

The moon seems to be upside down in the Southern Hemisphere.

The sun rises in the east and sets in the west in both hemispheres.

**DIRECTIONS:** Use the map, and the information above to answer the questions below.

1. If it is summer in North America, what season would it be in Australia? \_\_\_\_\_
2. In which hemisphere do most of the people in the world live? \_\_\_\_\_
3. How many continents are at least partly in the Northern Hemisphere? \_\_\_\_\_
4. If the sun rises in the east in the Northern Hemisphere, which direction does it set in the Southern Hemisphere? \_\_\_\_\_

Answers: 1. Winter 2. Northern 3. 5 4. West

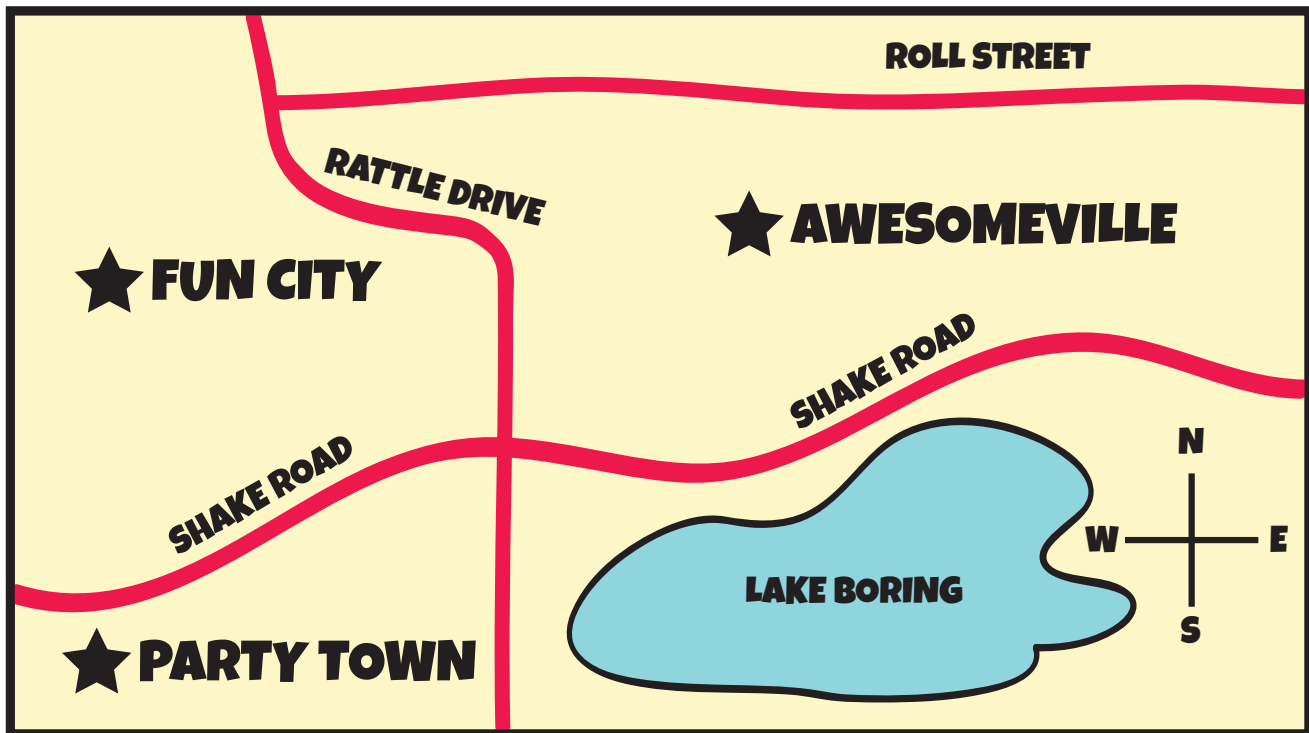
# ROAD TRIP!

You will have to travel by car when you get to land, and you'll need to know how to get around.

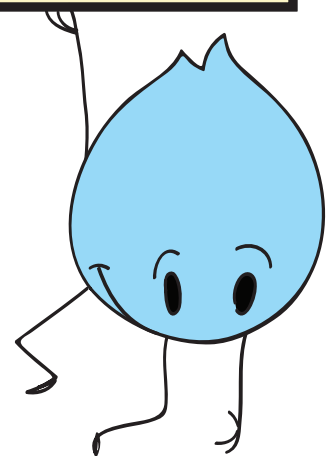
## DIRECTIONS:

Check out the map below, and answer the questions.

**EXAMPLE:** What road divides Fun City and Party Town? (Shake Road)



1. What road runs North and South? \_\_\_\_\_
2. What city is North of Shake Road? \_\_\_\_\_
3. What road is North of Awesomeville? \_\_\_\_\_
4. What landmark is South of Shake Road? \_\_\_\_\_
5. How many roads run East and West? \_\_\_\_\_



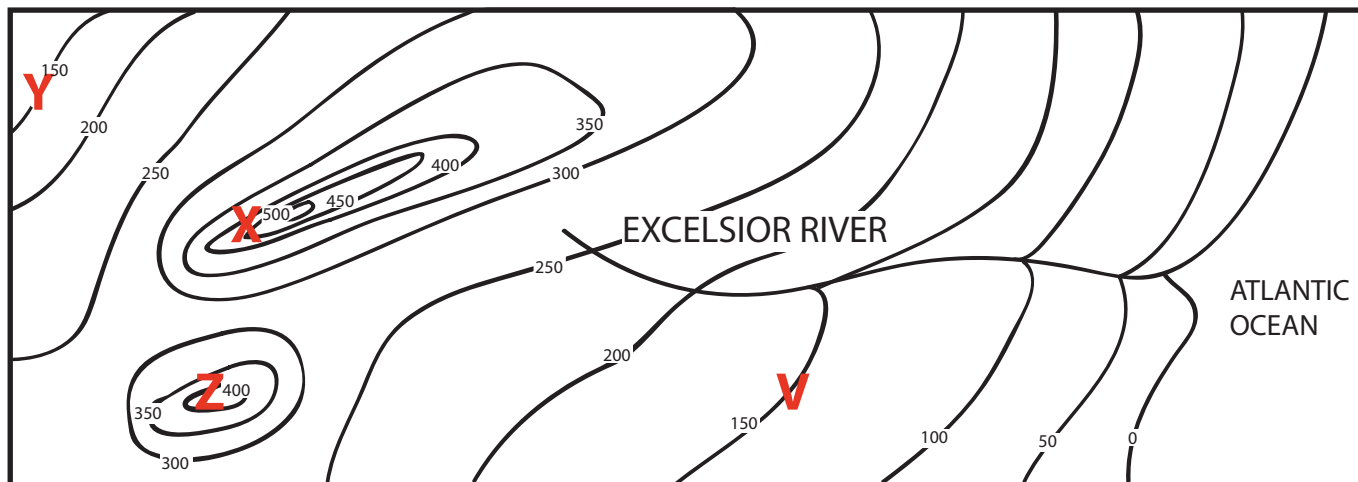
**Answers:** 1. Rattle Drive 2. Fun City and Awesomeville 3. Roll Street 4. Lake Boring 5. Two

# TOPOGRAPHIC OR CONTOUR MAPS

How steep is that hill? Find out by checking the topography of the area. Topography is how tall the land is (this is called elevation).

## DIRECTIONS:

Look at the map below. The height of each piece of land is marked in feet with a wavy line. Answer the questions below.



1. If you wanted to build a house at the lowest elevation, where would you build it?

---

2. What is the tallest point on this map?

---

3. What type of landform do you think cities X and Z are on?

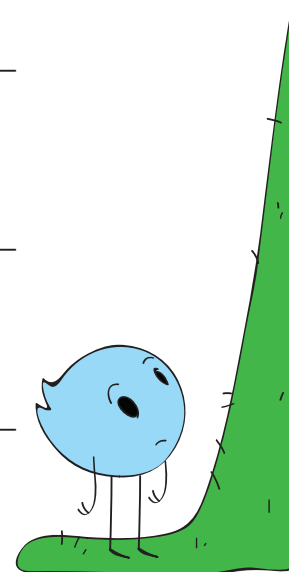
---

4. What two cities are the same height?

---

5. Do you think the Excelsior River flows towards the ocean or away from the ocean? Why?

---



**Answers:** 1. by the Atlantic Ocean 2. 500 ft. 3. mountains 4. Y and V 5. Towards the ocean, because the elevation decreases the closer you get to the ocean.


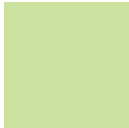





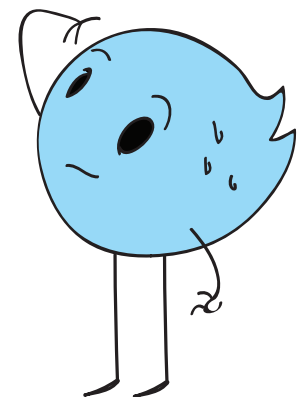
# CLIMATE MAPS

Climate maps give you information about the climate (weather) and precipitation (rain and snow). Map makers use different colors to show the differences in climate and precipitation on a climate map.



## CLIMATE ZONE KEY:

	Tropical Wet
	Tropical Dry
	Semi-Arid
	Arid
	Mild



### DIRECTIONS:

There is a **climate zone key** to the right of the map. Use this key to answer the questions below.

1. What is the climate of Maseru? \_\_\_\_\_
2. What is the climate of Niamey? \_\_\_\_\_
3. What is the climate of Cairo? \_\_\_\_\_
4. What is the climate of Libreville? \_\_\_\_\_
5. What is the climate of Lusaka? \_\_\_\_\_

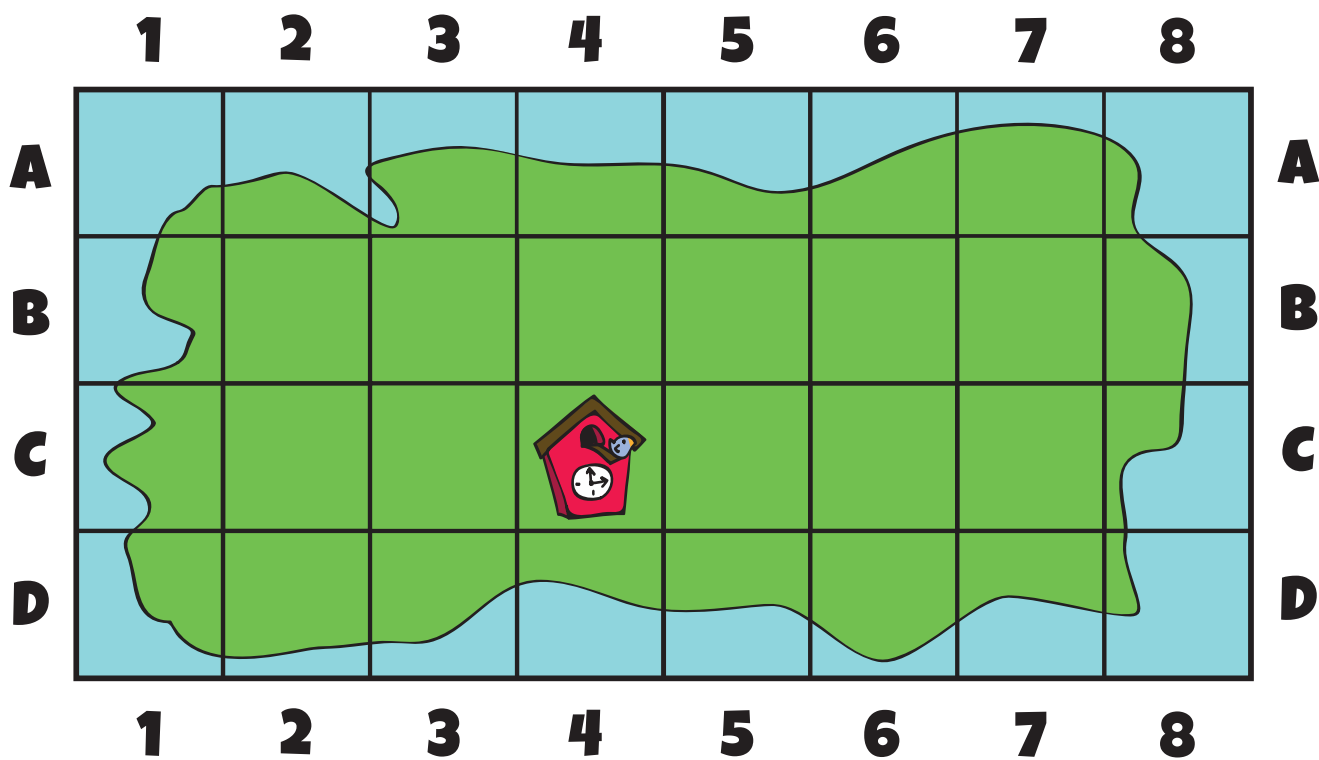
ANSWERS: 1. Mild 2. Semi-arid 3. Arid 4. Tropical Wet 5. Tropical Dry

# WHERE AM I?: MAP COORDINATES

While you are travelling, you get stranded on an island. You realize that someone else on the island is trying to take all the incredible items you have found from all the different countries you've visited! You decide to hide the items all over the island, and you create a map so you don't forget where they are.

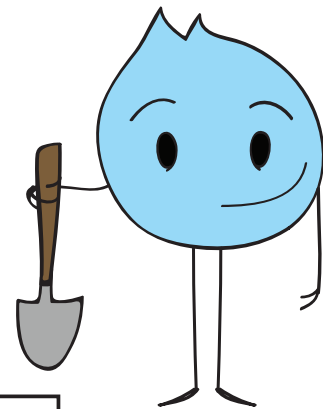
## DIRECTIONS:

Cut out the pictures of your important items below, and glue them in the correct boxes, according to the coordinates on the map.



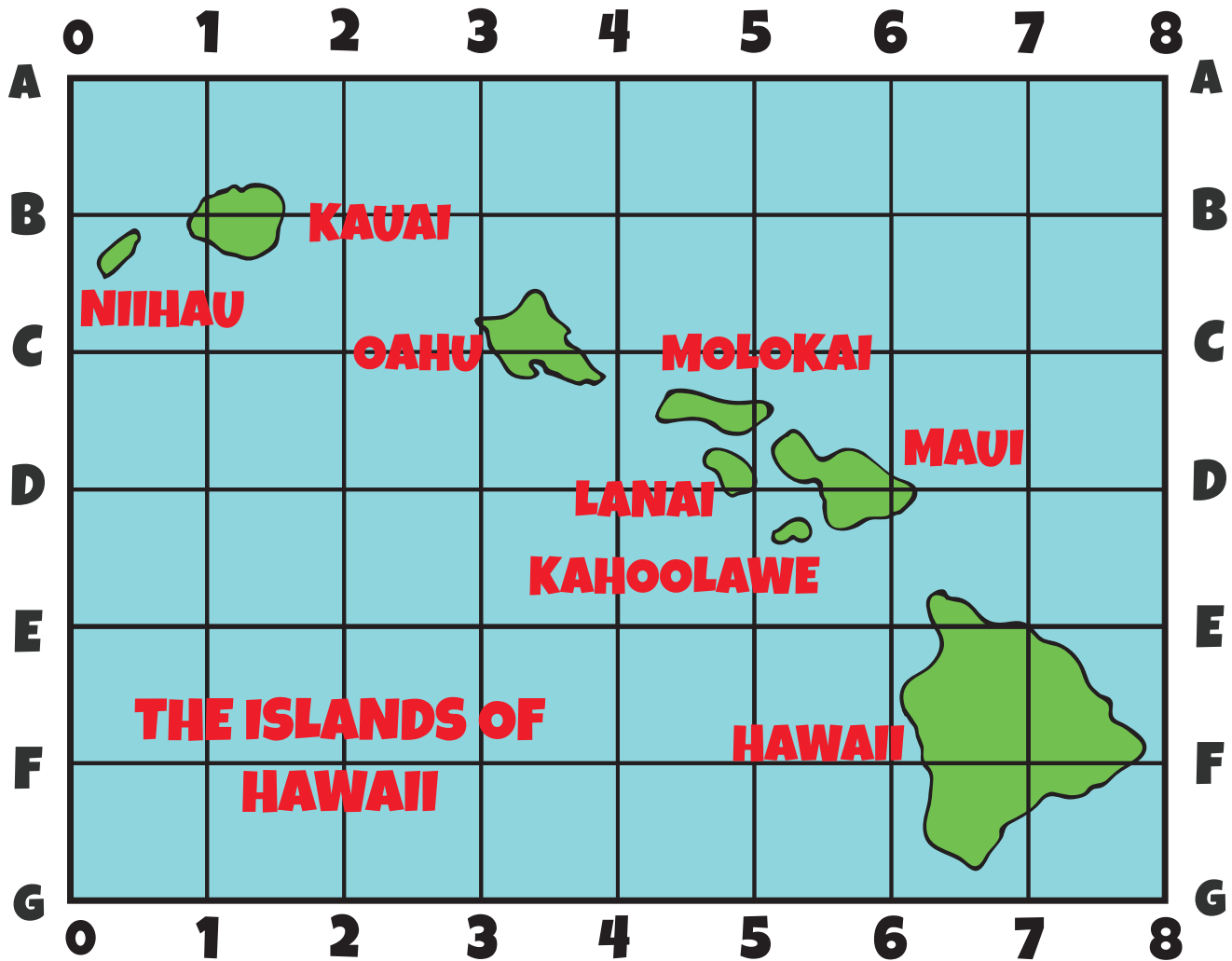
Example: Put the cuckoo clock you found in Germany on box C-4.

1. Hide the kangaroo you got from Australia in box C-6.
2. Bury the gold coins you found in Egypt in box B-2.
3. Stick the flag you got from Canada in box D-2.
4. Store the dried fruit you got from India in box A-7.
5. Put the silks you got from China in box C-2.



# HOW TO READ A MAP USING A GRID AND INDEX

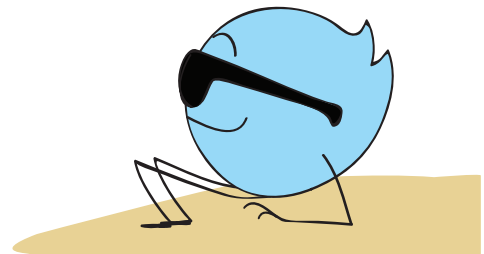
Before smart phones, map grids were how people traveled from one place to another. On your travels, you may not always get cell phone service, so you'll need to learn how to use map grids, too.



## DIRECTIONS:

Start with the letters along the sides of the map. That is the first part of the location. Then, use the numbers along the top and bottom of the map next. That is the second part of the location. Where the two lines meet, that is your destination.

1. B, 1 \_\_\_\_\_
2. E, 7 \_\_\_\_\_
3. D, 6 \_\_\_\_\_
4. D, 5 \_\_\_\_\_



Answers: 1. Kauai 2. Hawaii 3. Maui 4. Lanai

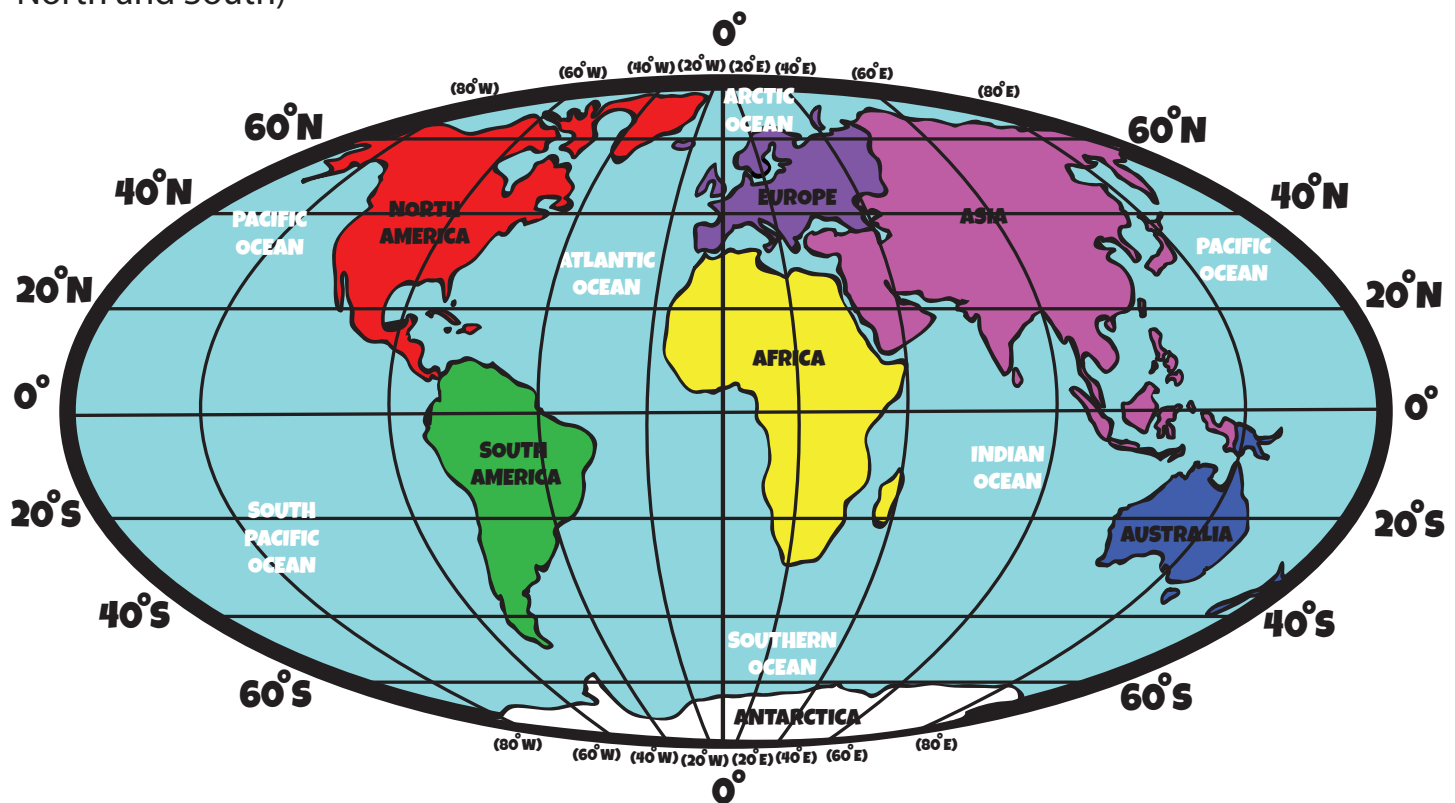
# WHAT IS LATITUDE AND LONGITUDE, AND HOW DO YOU USE IT?

Some of this journey will take place over water. To navigate the ocean, you will have to understand latitude and longitude coordinates.

**What is latitude and longitude?**

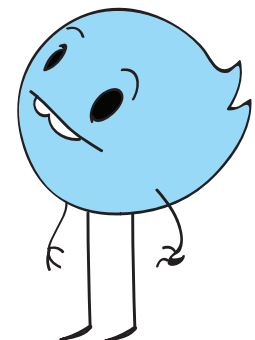
**LATITUDE:** Lines that go around the globe (they go by the directions East and West)

**LONGITUDE:** Lines that point from top to bottom of the globe (they go by the directions North and South)



**EXAMPLE:** What continent is at 20° South and 40° West? (South America)

1. What continent is 40° North and 20° East? \_\_\_\_\_
2. What ocean is found at 20° South and 60° East? \_\_\_\_\_
3. What continent is at 60° South and 60° East? \_\_\_\_\_
4. What ocean is at 40° South and 80° West? \_\_\_\_\_
5. What continent is at 40° North and 80° East? \_\_\_\_\_

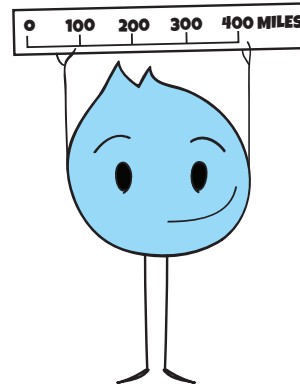
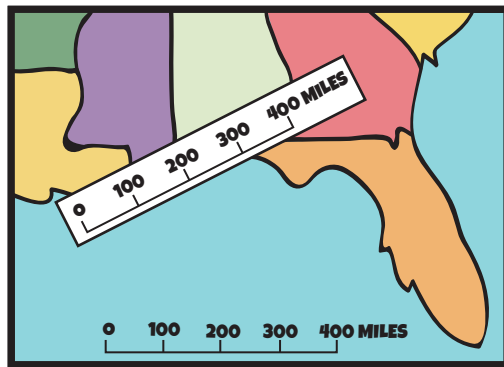


**Answers:** 1. Europe 2. Indian Ocean 3. Antarctica 4. South Pacific Ocean 5. Asia

# MAP SCALE

Everything looks so small on a map, so how can you tell how far you need to travel? The map scale will help you figure out the distance.

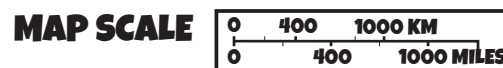
The picture below has a map scale along the bottom of the map that goes from 0 miles to 400 miles, counting by hundreds. The boy using the map wanted to figure out about how far it was from Louisiana to Georgia, so he used a piece of white paper, and copied the map scale down. Now, he can use the paper like a ruler, and measure whatever distances he wants on the map.



**DIRECTIONS:** Cut off the map scale at the bottom of the page. It matches the map below. Use it to measure the distances given.



1. Distance from Bogota to Quito.  
\_\_\_\_\_
2. Distance from La Paz to Brasilia.  
\_\_\_\_\_
3. Distance from Asuncion to Quito.  
\_\_\_\_\_
4. Distance from Georgetown to Santiago.  
\_\_\_\_\_
5. Distance from Brasilia to Bogota.  
\_\_\_\_\_





# MAPS IN HISTORY

Sometimes in order to find treasure, you'll need to use old maps to track them down!  
Here are some maps you've come across while travelling.

**DIRECTIONS:** Check out the historical maps below and answer the questions.



**NICOLAUS GERMANUS DREW THIS MAP IN 1467**

1. What continents do you think this map is showing?

\_\_\_\_\_

\_\_\_\_\_

and \_\_\_\_\_

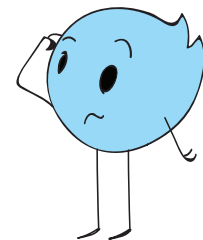


**WILLEM BLAEU DREW THIS MAP IN 1665**

2. What continents do you think this map is showing?

\_\_\_\_\_

and \_\_\_\_\_



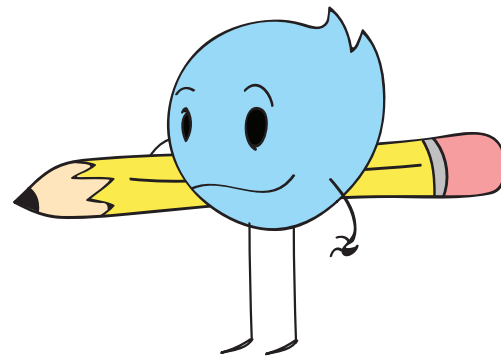
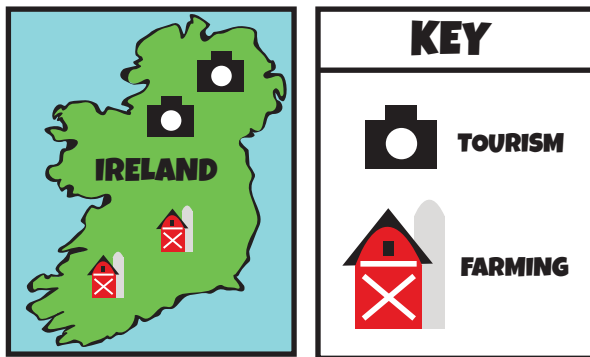
**Answers:** 1. Asia, Africa, and Europe 2. North America and South America

# ECONOMIC OR RESOURCE MAPS

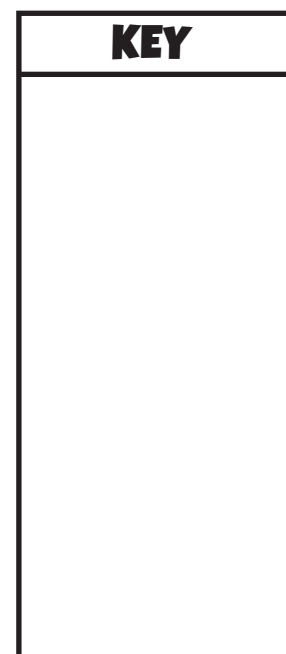
In some countries, you'll have to look at economic maps (also called resource maps) to find out if it is worth it to look there for amazing items. A resource map tells you about a country's natural resources (what items are from that area), and about the economy (what they sell).

## DIRECTIONS:

Look at the example of a resource/economic map below. Then, read the paragraph. It describes the resources and economy for India. Create your own economic/resource map by using the information in the paragraph. Come up with symbols for each product or service based on what you read.



*India has a large economy. It is a huge grower of fruit such as: bananas, apples, mangos, pomegranate and oranges. India also grows vegetables; mainly onions and potatoes. The country grows flowers to sell to other countries, too. India also specializes in spices for food. India's booming economy isn't just what they grow above ground, but also what can be found below the earth. India has oil buried underneath the dirt. India also has many factories where they make and package products such as cereal. A large part of India's business is providing phone support to customers all around the world. India is a very busy place.*



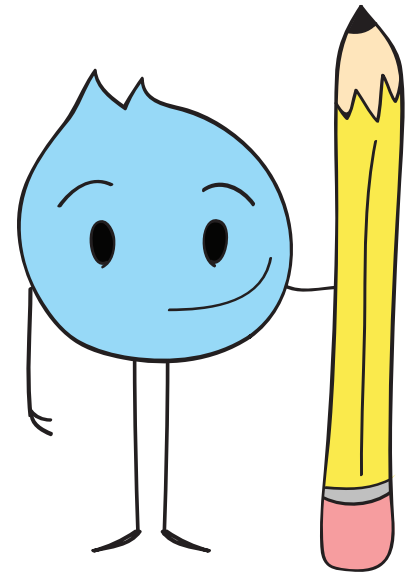
# MAP YOUR OWN ROAD TRIP THROUGHOUT EUROPE

You heard that there are a lot of really neat items in Europe, so you want to tour its countries. You have already decided the order of the cities, but you still need to map out your route.





# MAP YOUR OWN ROAD TRIP THROUGHOUT EUROPE



You decide to dock your boat in Rome, Italy. Draw a picture of a boat there.

Once you get off the boat, you decide to take a train to Venice. Draw a railroad track from Rome to Venice.

In Venice, you discover a rare, beautiful painting. Draw a small rectangle at Venice for the painting.

From Venice, you rent a car and drive to Munich, Germany. Draw a straight line from Venice to Munich for the road.

Munich has so many beautiful castles that you decide to get small statues of each one that you visit. Draw a castle over the city of Munich.

You decide to take the train to Paris, France. Draw railroad tracks from Munich to Paris.

Paris is known for their fantastic desserts, so you stock up on all different kinds to take back to the ship and share with your crew. Draw a picture of a dessert on Paris.

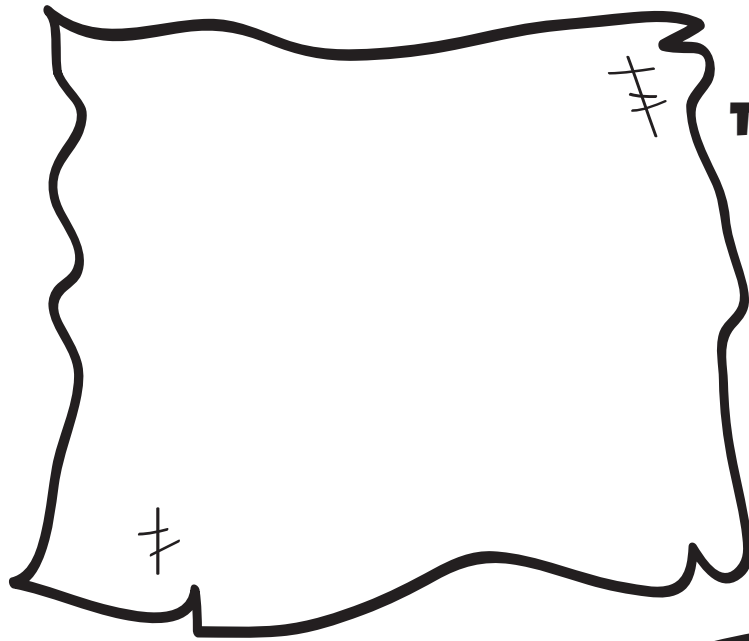
You are running out of time, so you hop on a plane in Paris and fly back to Rome where your ship is docked. Draw a wavy line from Paris to Rome to represent the airplane ride.

Congratulations! You've made it back to your ship safe and sound, with more items for your collection!

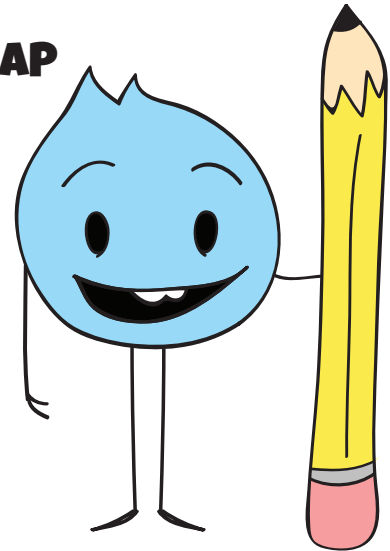
# CREATE YOUR OWN MAP!

## DIRECTIONS:

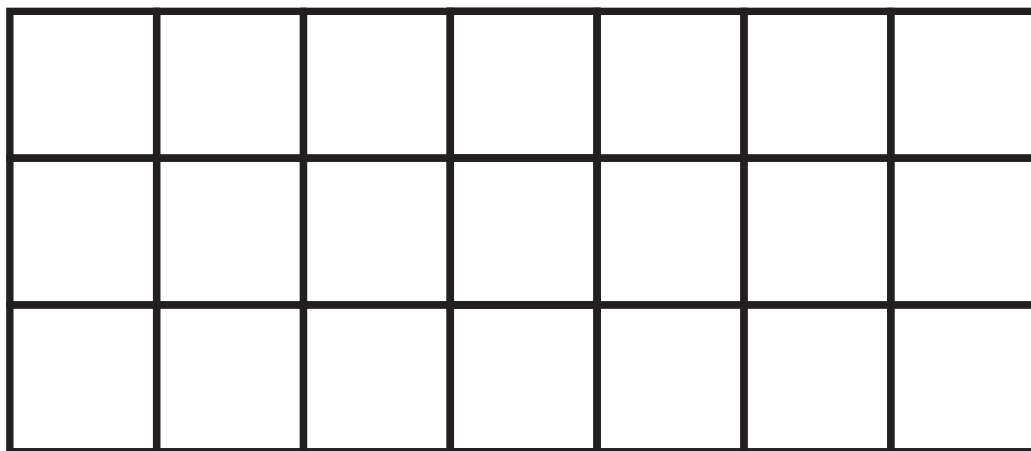
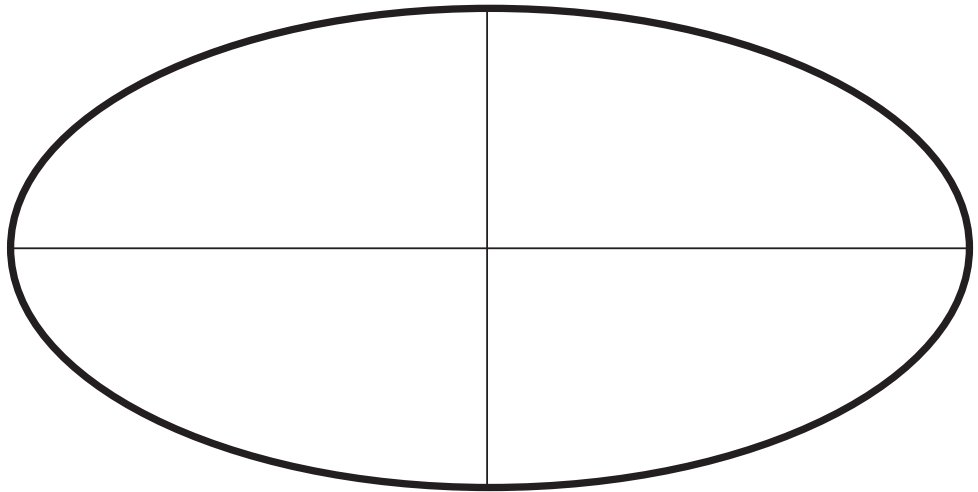
Now that you have so much experience working with maps, you can create your own maps. There are different types on this page, so have fun!



**TREASURE MAP**



**WORLD MAP**



**GRID MAP**



# Great job!

---

is an ThuVienTiengAnh.Com social studies superstar